

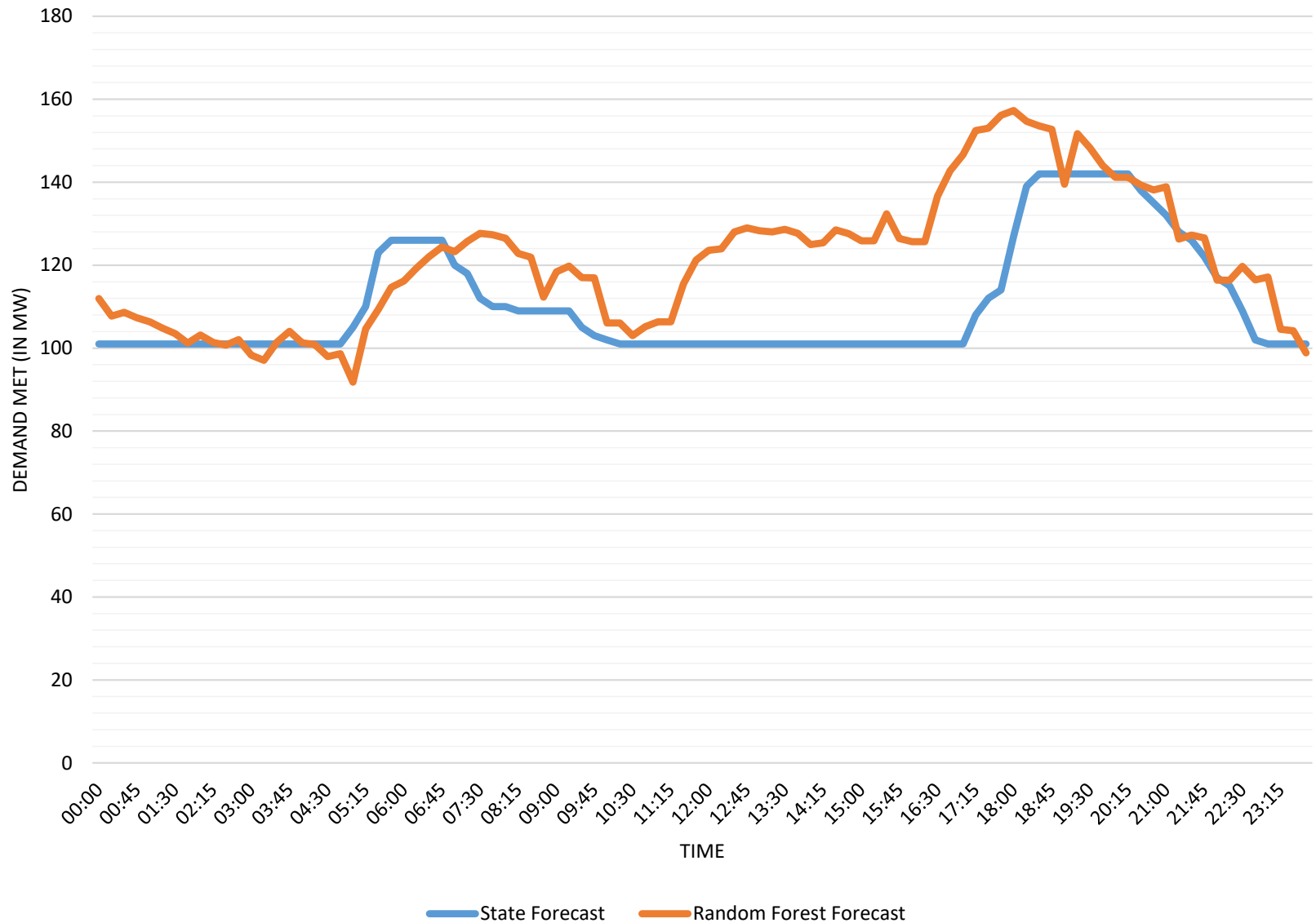
## **Load Forecast of NER States for 08-Oct-23 & Comparison with Actual Demand Met of 06-Oct-23**

**\* Load forecast of NER States and NER is done using Random Forest Method.**

**\* Load forecast is done at 15 minutes time-block.**

**\* Load forecast data submitted by the States is also included.**

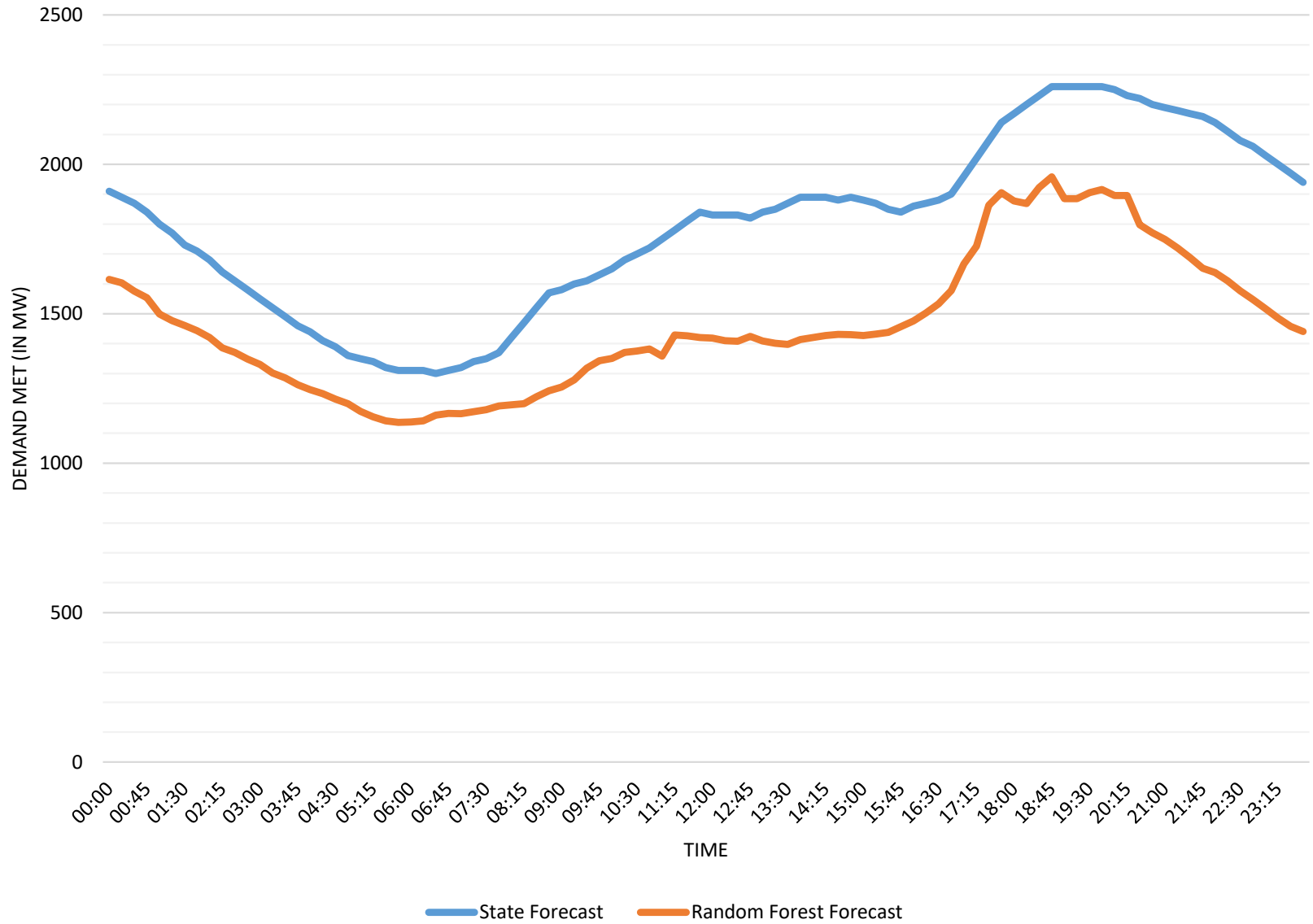
# Load Forecast of Arunachal Pradesh for 08-Oct-23



RF : Max, Min & Avg. (in MW) : 157 , 92 & 121

State : Max, Min & Avg. (in MW) : 142 , 101 & 110

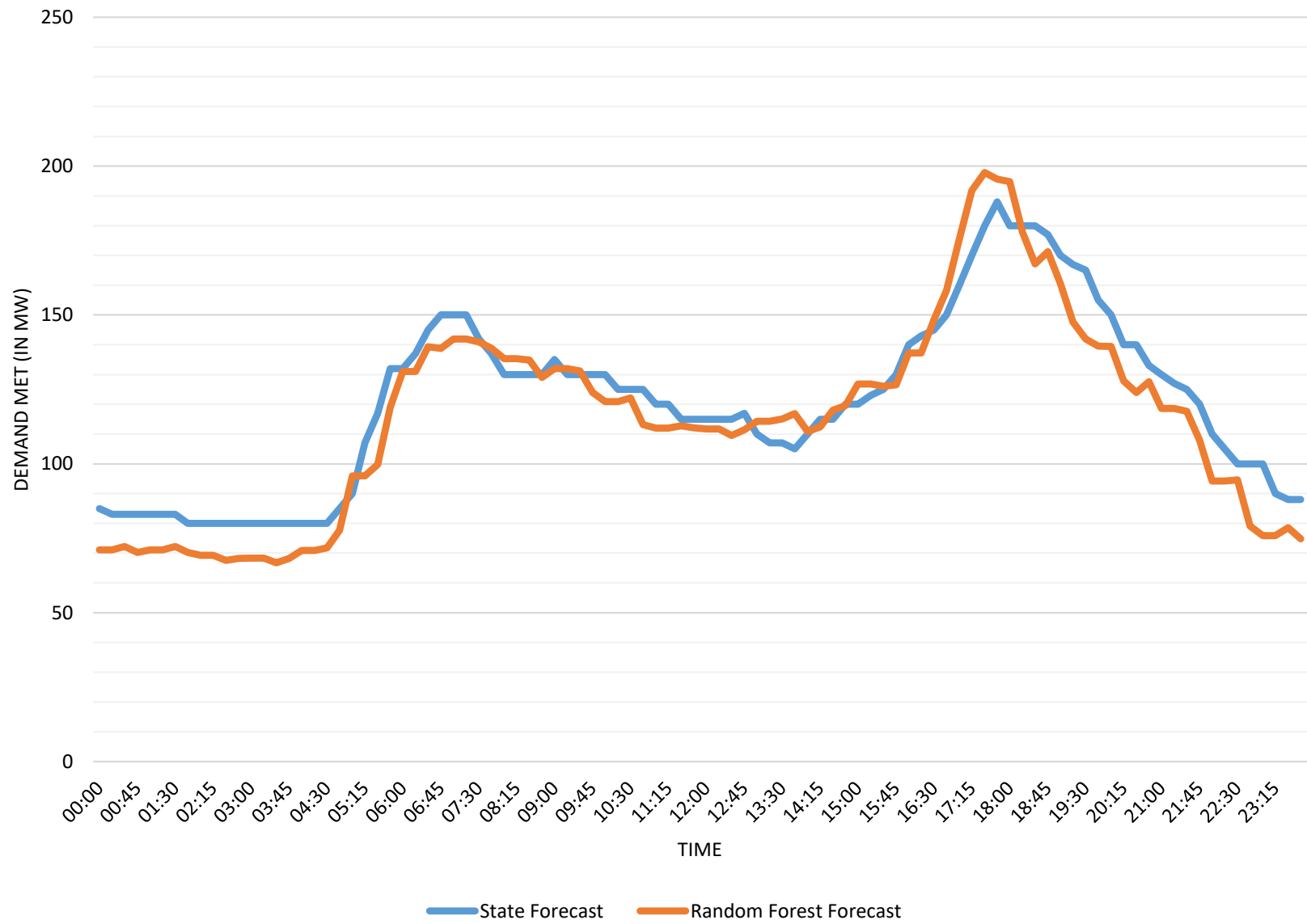
# Load Forecast of Assam for 08-Oct-23



RF : Max, Min & Avg. (in MW) : 1958 , 1137 & 1464

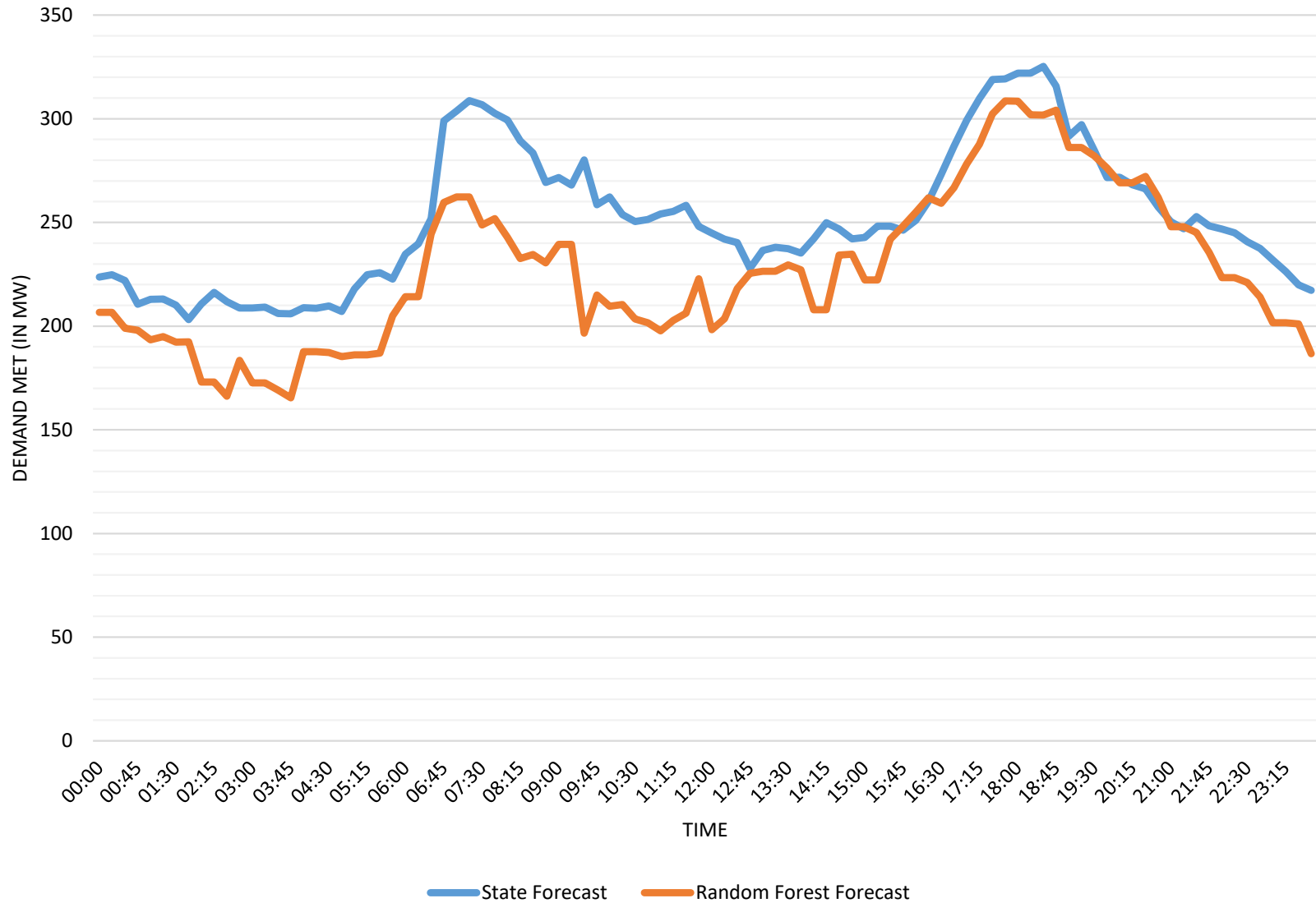
State : Max, Min & Avg. (in MW) : 2260 , 1300 & 1794

# Load Forecast of Manipur for 08-Oct-23



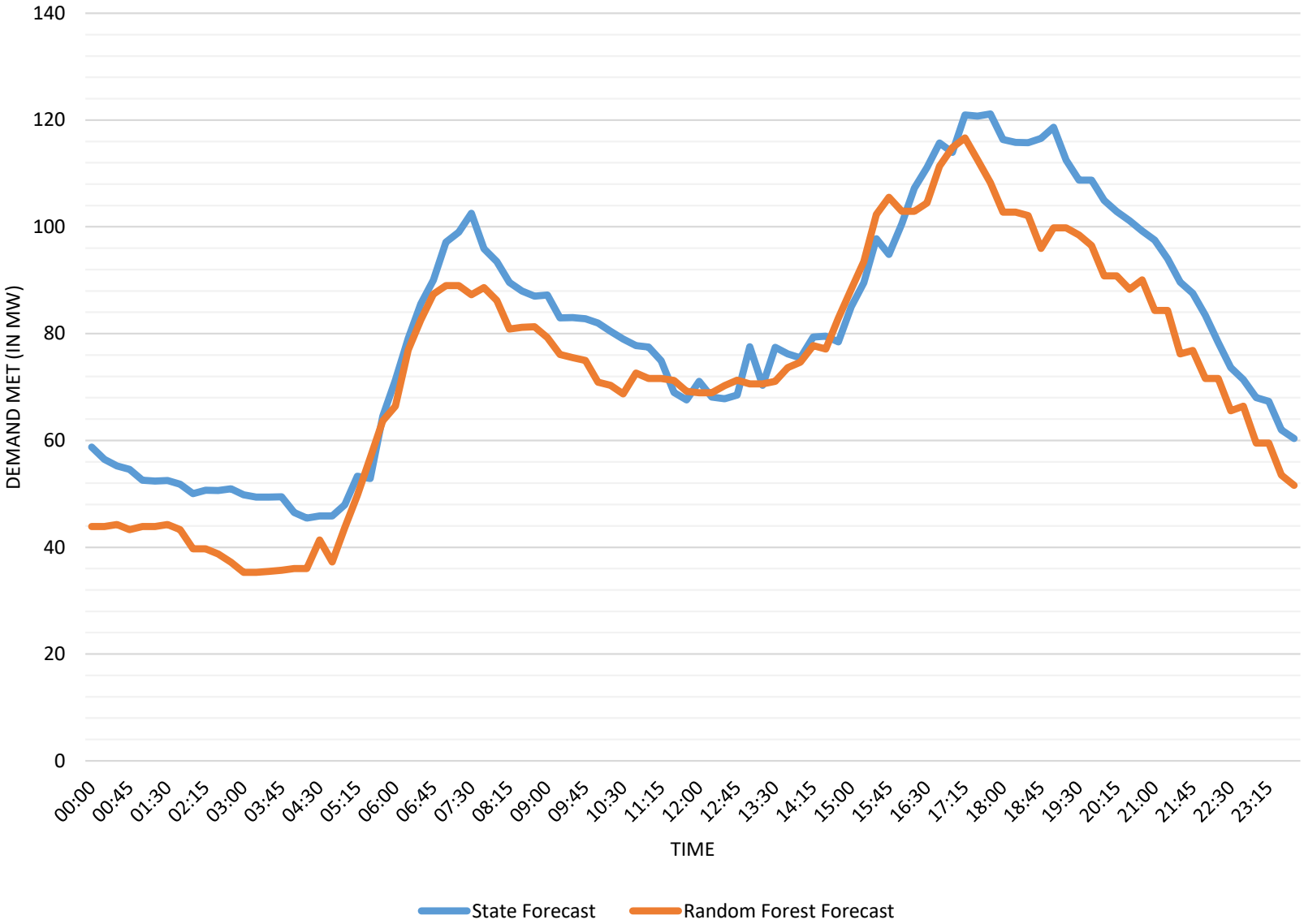
RF : Max, Min & Avg. (in MW) : 198 , 67 & 115  
State : Max, Min & Avg. (in MW) : 188 , 80 & 121

# Load Forecast of Meghalaya for 08-Oct-23



RF : Max, Min & Avg. (in MW) : 309 , 165 & 227  
State : Max, Min & Avg. (in MW) : 325 , 203 & 252

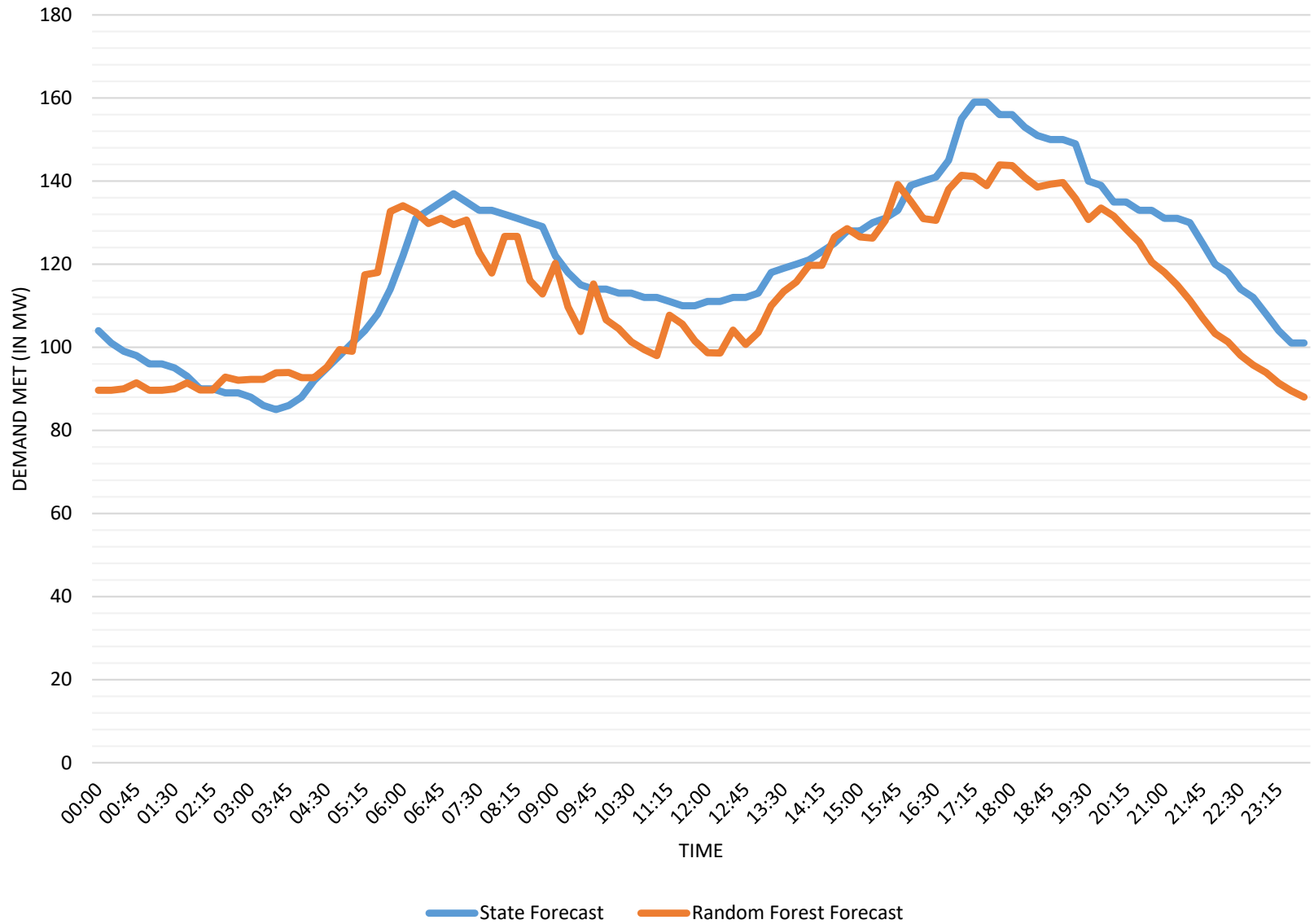
# Load Forecast of Mizoram for 08-Oct-23



RF : Max, Min & Avg. (in MW) : 117 , 35 & 73

State : Max, Min & Avg. (in MW) : 121 , 45 & 80

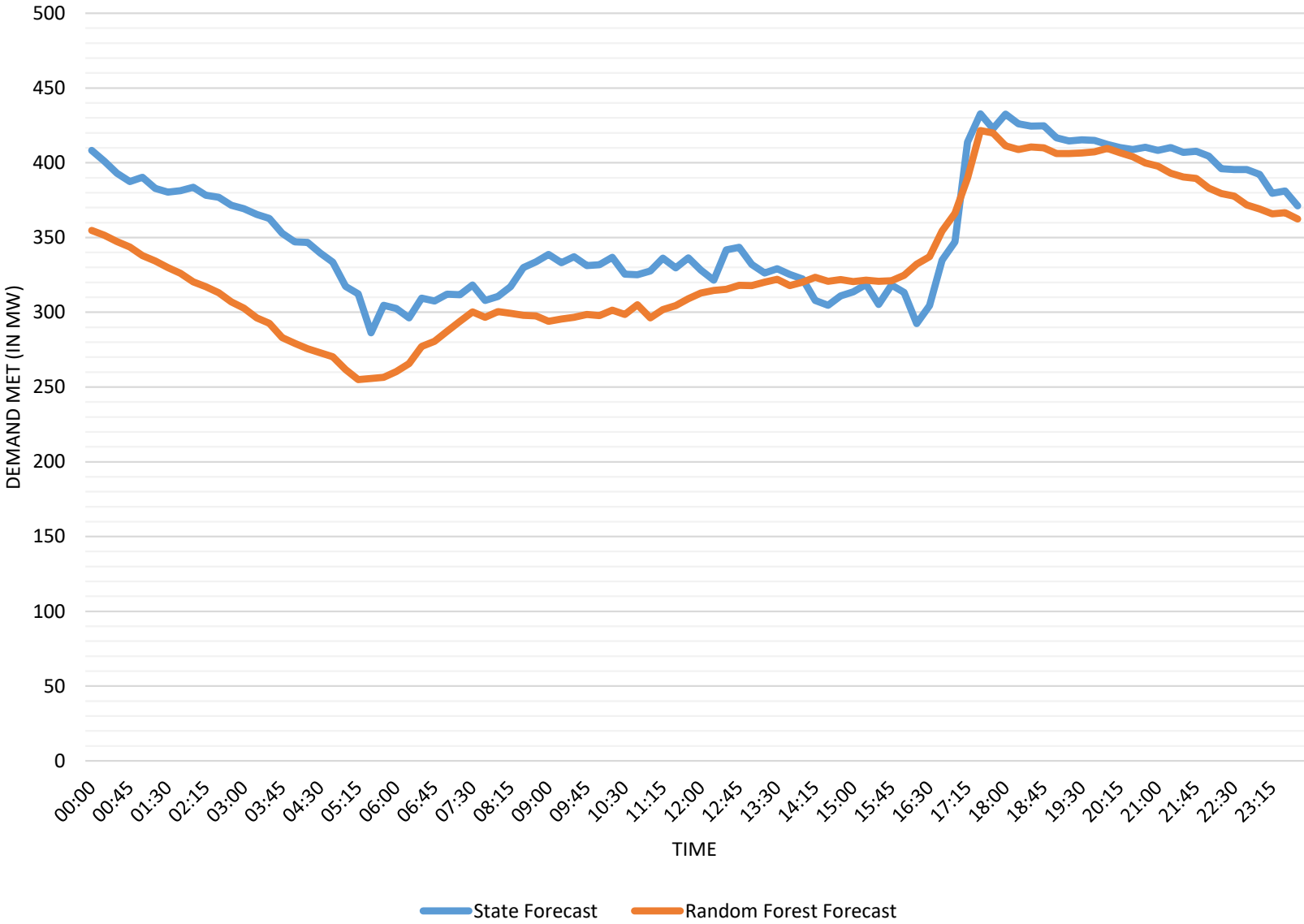
# Load Forecast of Nagaland for 08-Oct-23



RF : Max, Min & Avg. (in MW) : 144 , 88 & 113

State : Max, Min & Avg. (in MW) : 159 , 85 & 120

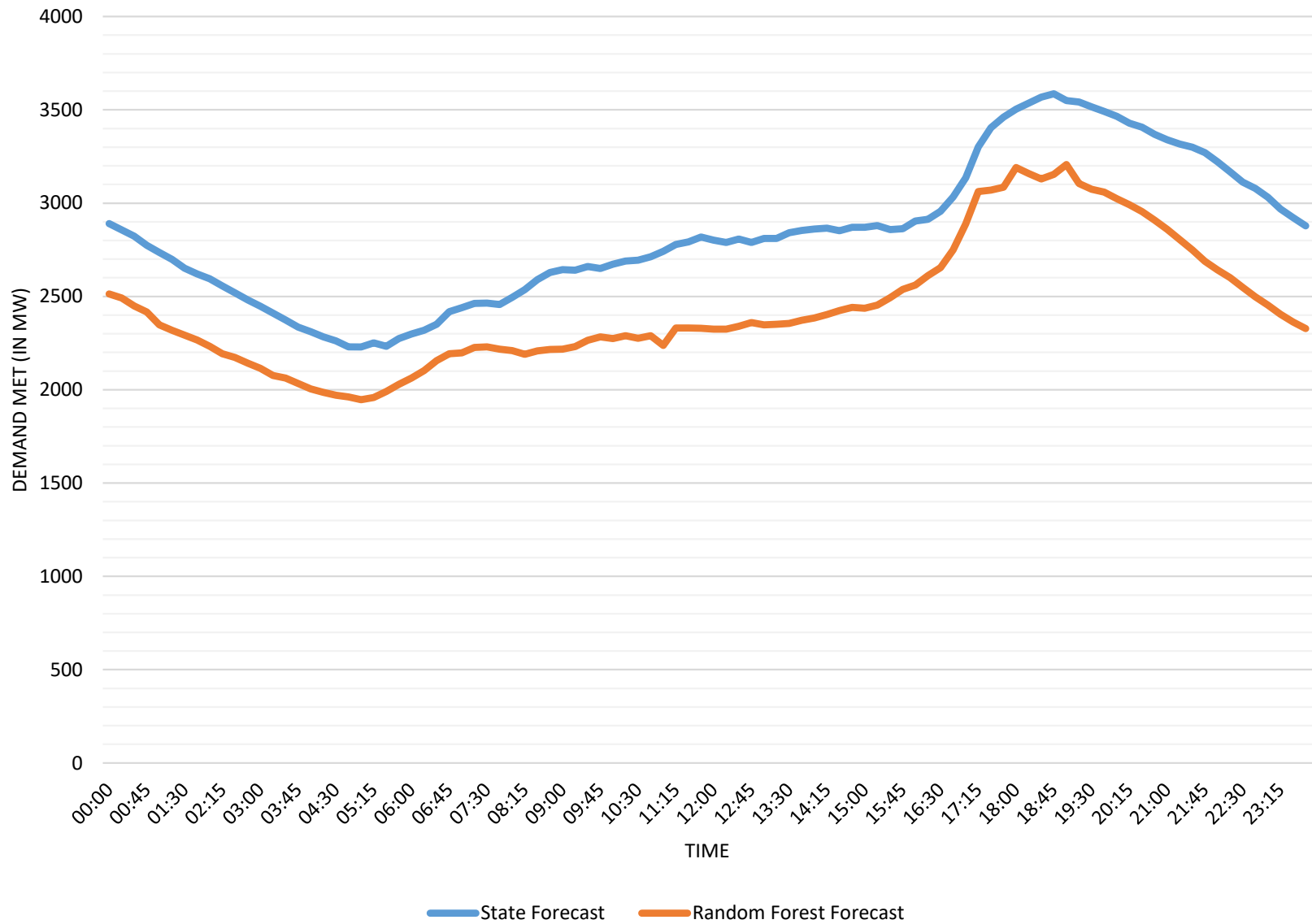
# Load Forecast of Tripura for 08-Oct-23



RF : Max, Min & Avg. (in MW) : 422 , 255 & 332  
 State : Max, Min & Avg. (in MW) : 433 , 286 & 356



# Load Forecast of NER for 08-Oct-23



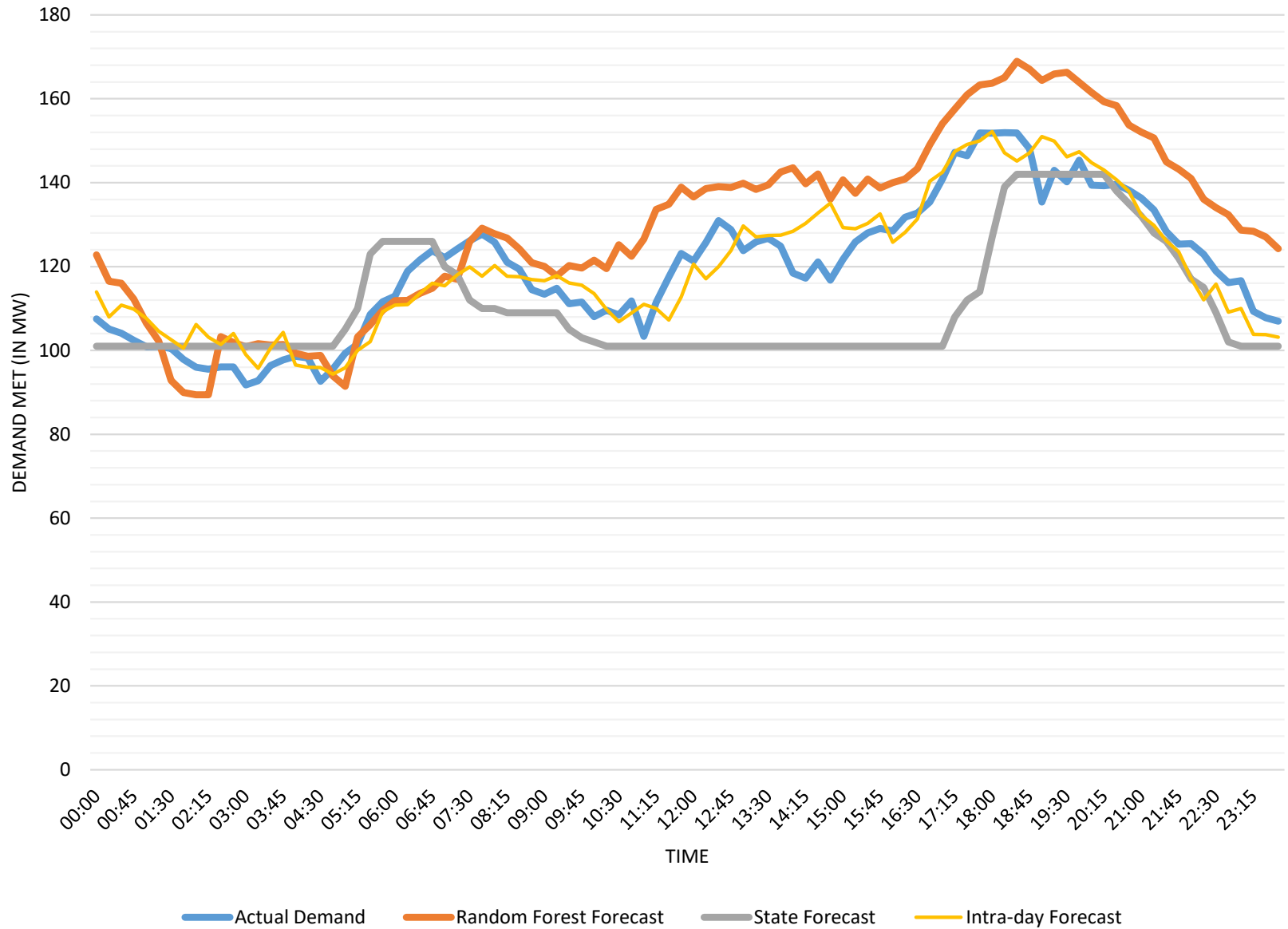
RF : Max, Min & Avg. (in MW) : 3207 , 1947 & 2442

State : Max, Min & Avg. (in MW) : 3586 , 2229 & 2832

## MAPE Table

Date of Comparison	06-Oct-23	Arunachal Pradesh	Assam	Manipur	Meghalaya	Mizoram	Nagaland	Tripura	NER
Percentage (%)	State Forecast	9.8	33.0	7.8	18.6	12.4	24.2	20.9	36.6
	Random Forest Forecast	9.7	22.5	5.5	4.4	5.0	14.1	8.6	15.8
	Intra - Day Forecast	4.2	3.1	4.0	7.9	3.4	6.9	4.8	2.6

Comparison of Load Forecast and Actual Demand of Arunachal Pradesh for 06-Oct-23



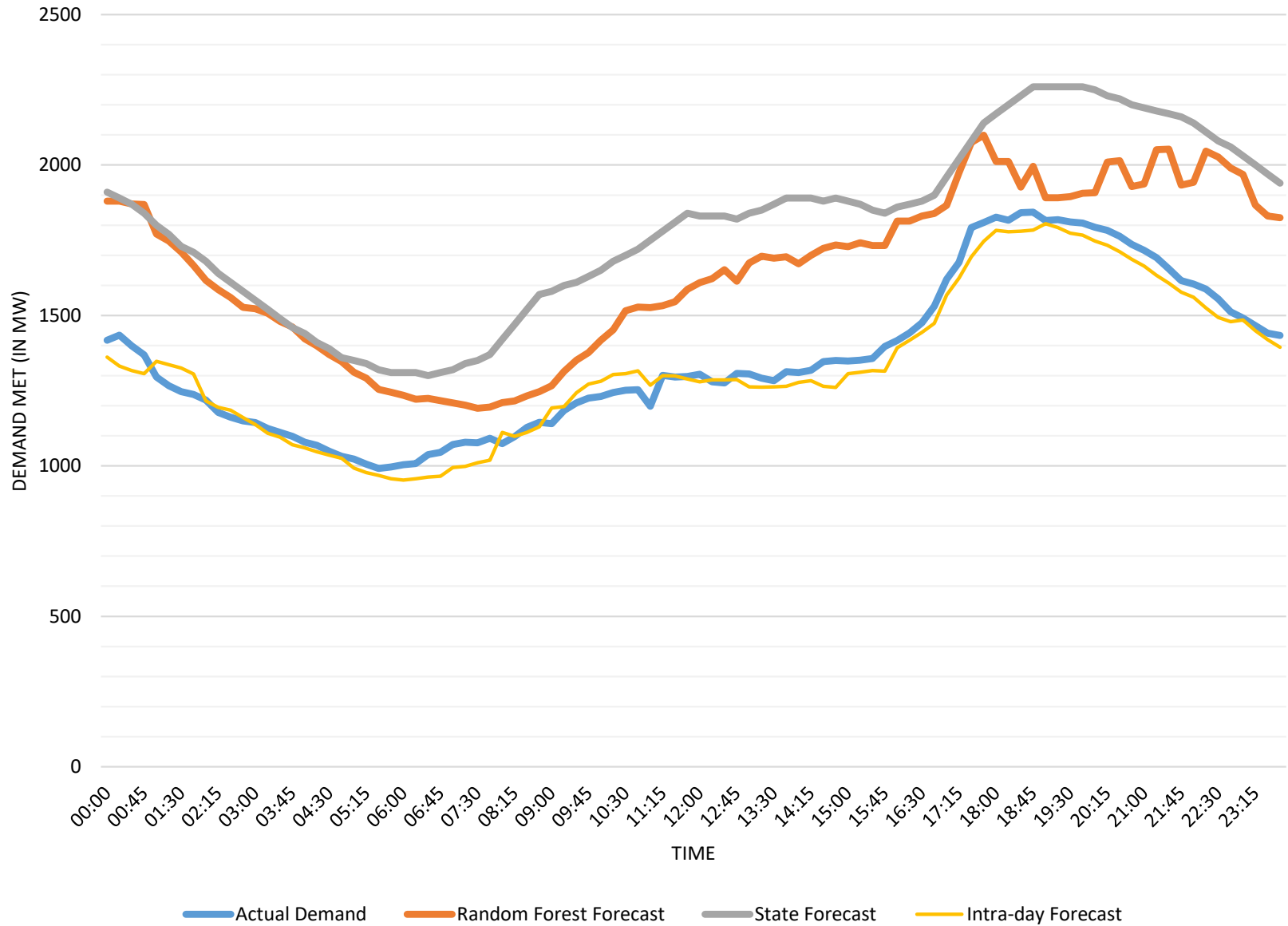
Actual Demand Met : Max, Min & Avg. (in MW) : 152 , 92 & 119

RF : Max, Min & Avg. (in MW) : 169 , 89 & 130

State : Max, Min & Avg. (in MW) : 142 , 101 & 110

IntraDay : Max, Min & Avg. (in MW) : 152 , 94 & 120

### Comparison of Load Forecast and Actual Demand of Assam for 06-Oct-23



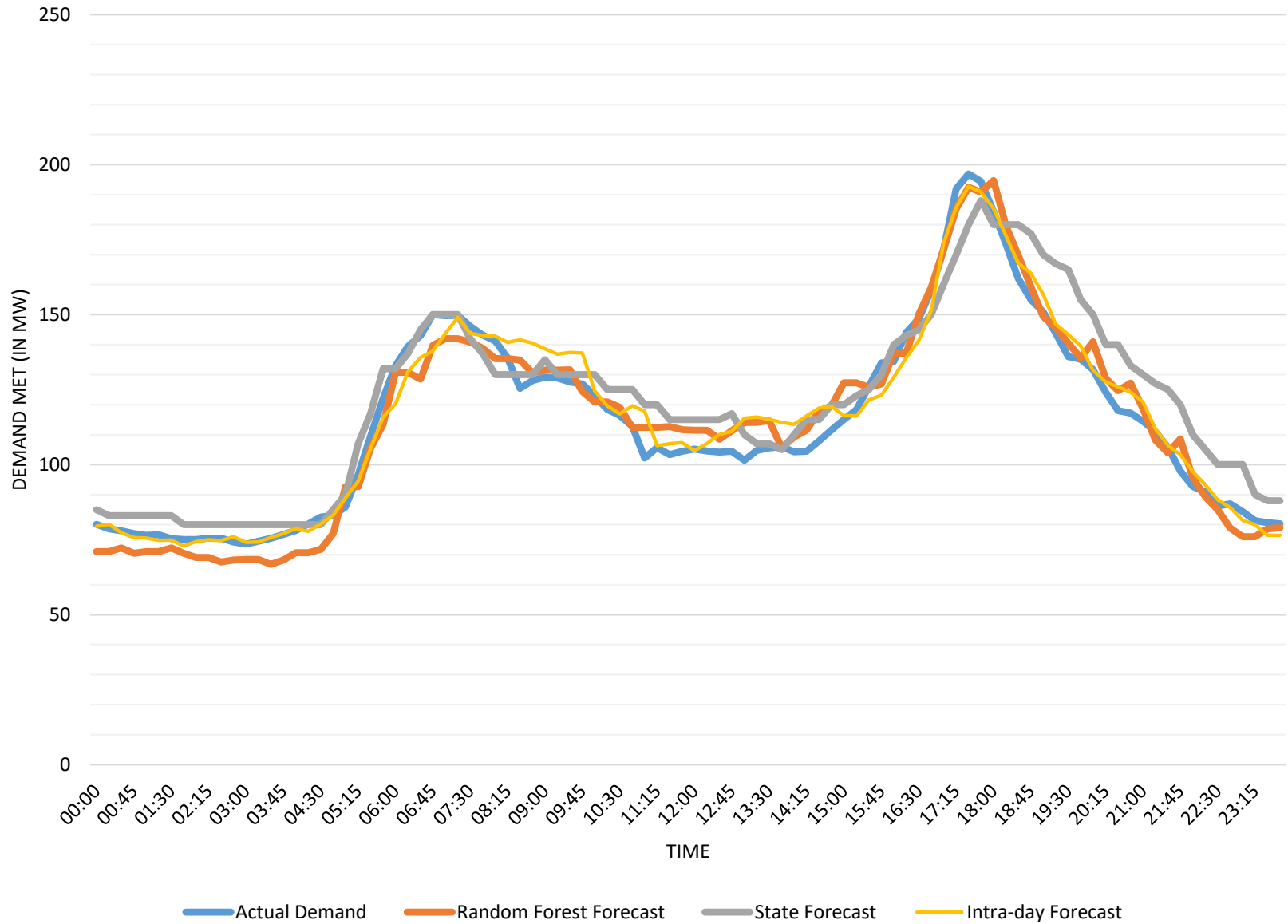
Actual Demand Met : Max, Min & Avg. (in MW) : 1843 , 991 & 1355

RF : Max, Min & Avg. (in MW) : 2099 , 1192 & 1651

State : Max, Min & Avg. (in MW) : 2260 , 1300 & 1794

IntraDay : Max, Min & Avg. (in MW) : 1805 , 953 & 1331

### Comparison of Load Forecast and Actual Demand of Manipur for 06-Oct-23



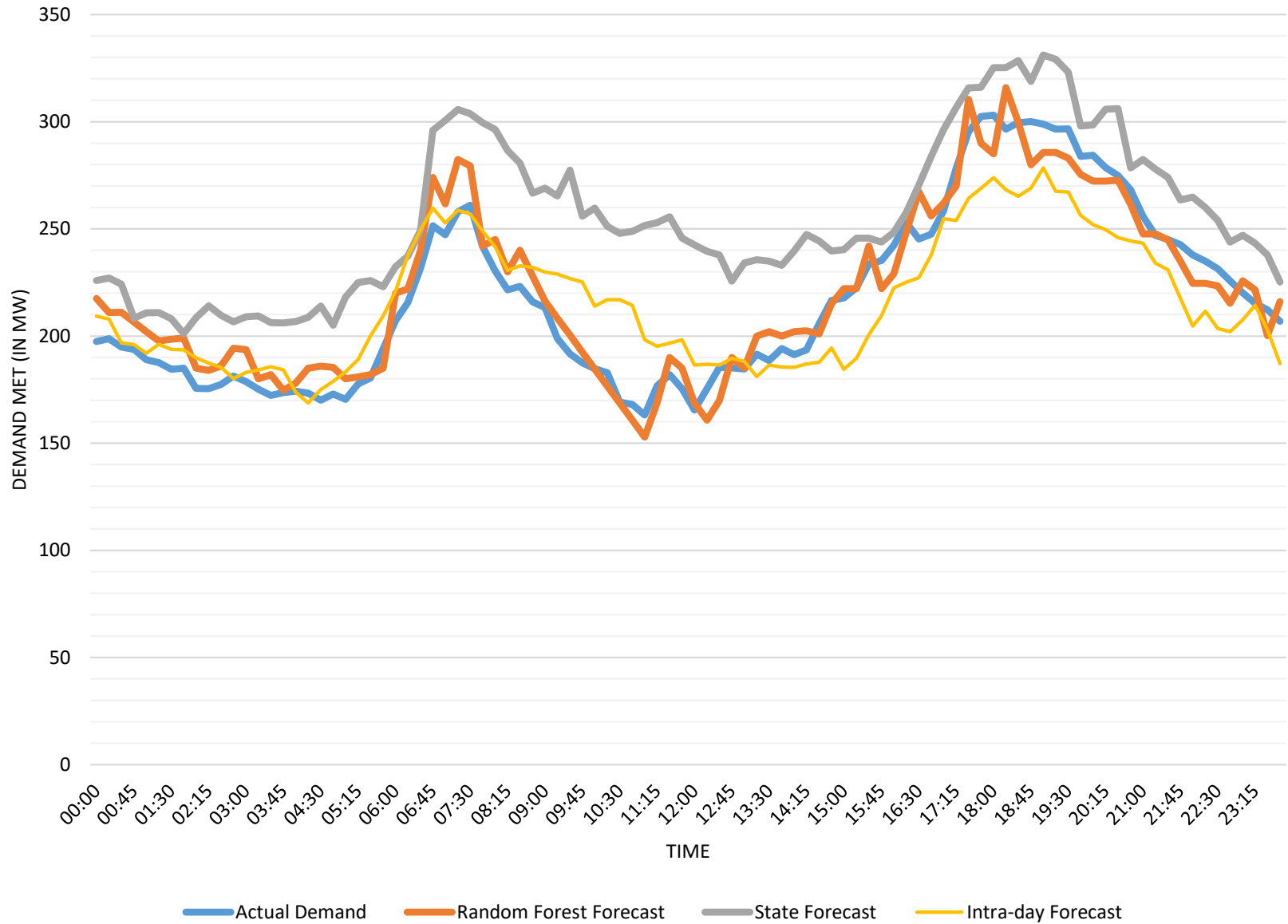
Actual Demand Met : Max, Min & Avg. (in MW) : 197 , 74 & 114

RF : Max, Min & Avg. (in MW) : 195 , 67 & 114

State : Max, Min & Avg. (in MW) : 188 , 80 & 121

IntraDay : Max, Min & Avg. (in MW) : 193 , 73 & 116

### Comparison of Load Forecast and Actual Demand of Meghalaya for 06-Oct-23



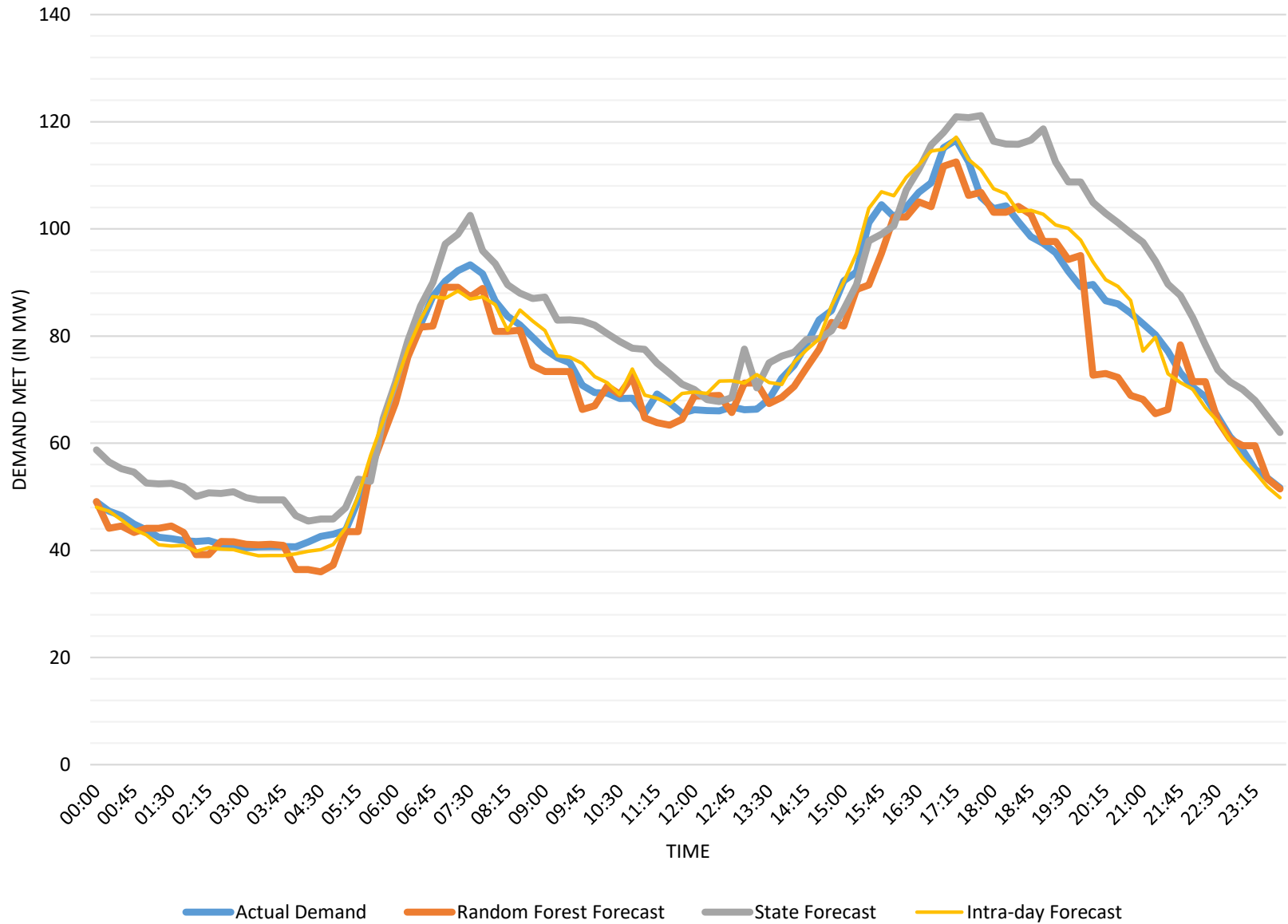
Actual Demand Met : Max, Min & Avg. (in MW) : 303 , 163 & 218

RF : Max, Min & Avg. (in MW) : 316 , 153 & 221

State : Max, Min & Avg. (in MW) : 331 , 201 & 255

IntraDay : Max, Min & Avg. (in MW) : 278 , 169 & 216

### Comparison of Load Forecast and Actual Demand of Mizoram for 06-Oct-23



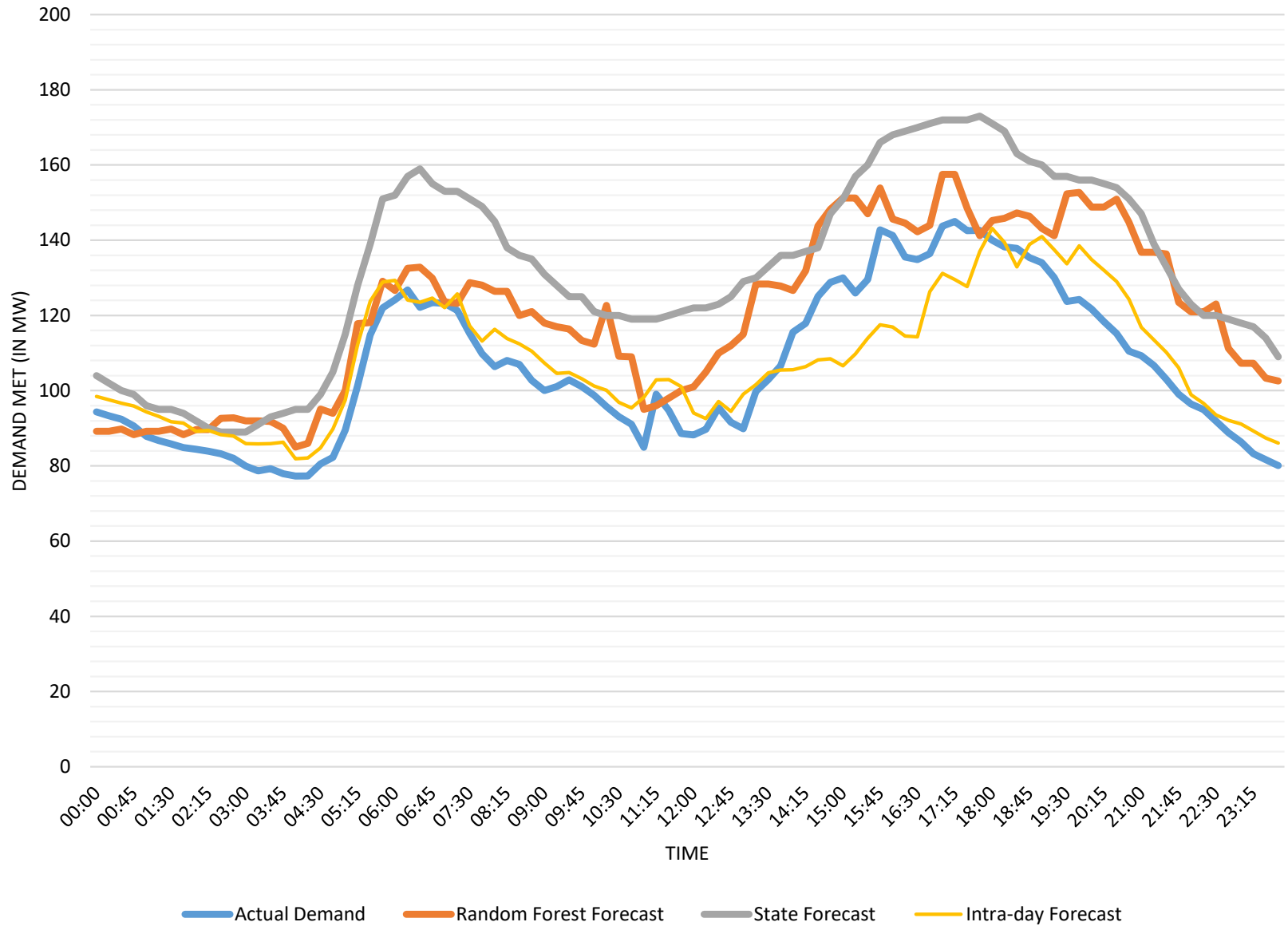
Actual Demand Met : Max, Min & Avg. (in MW) : 117 , 40 & 73

RF : Max, Min & Avg. (in MW) : 112 , 36 & 70

State : Max, Min & Avg. (in MW) : 121 , 45 & 80

IntraDay : Max, Min & Avg. (in MW) : 117 , 39 & 73

### Comparison of Load Forecast and Actual Demand of Nagaland for 06-Oct-23



Actual Demand Met : Max, Min & Avg. (in MW) : 145 , 77 & 106

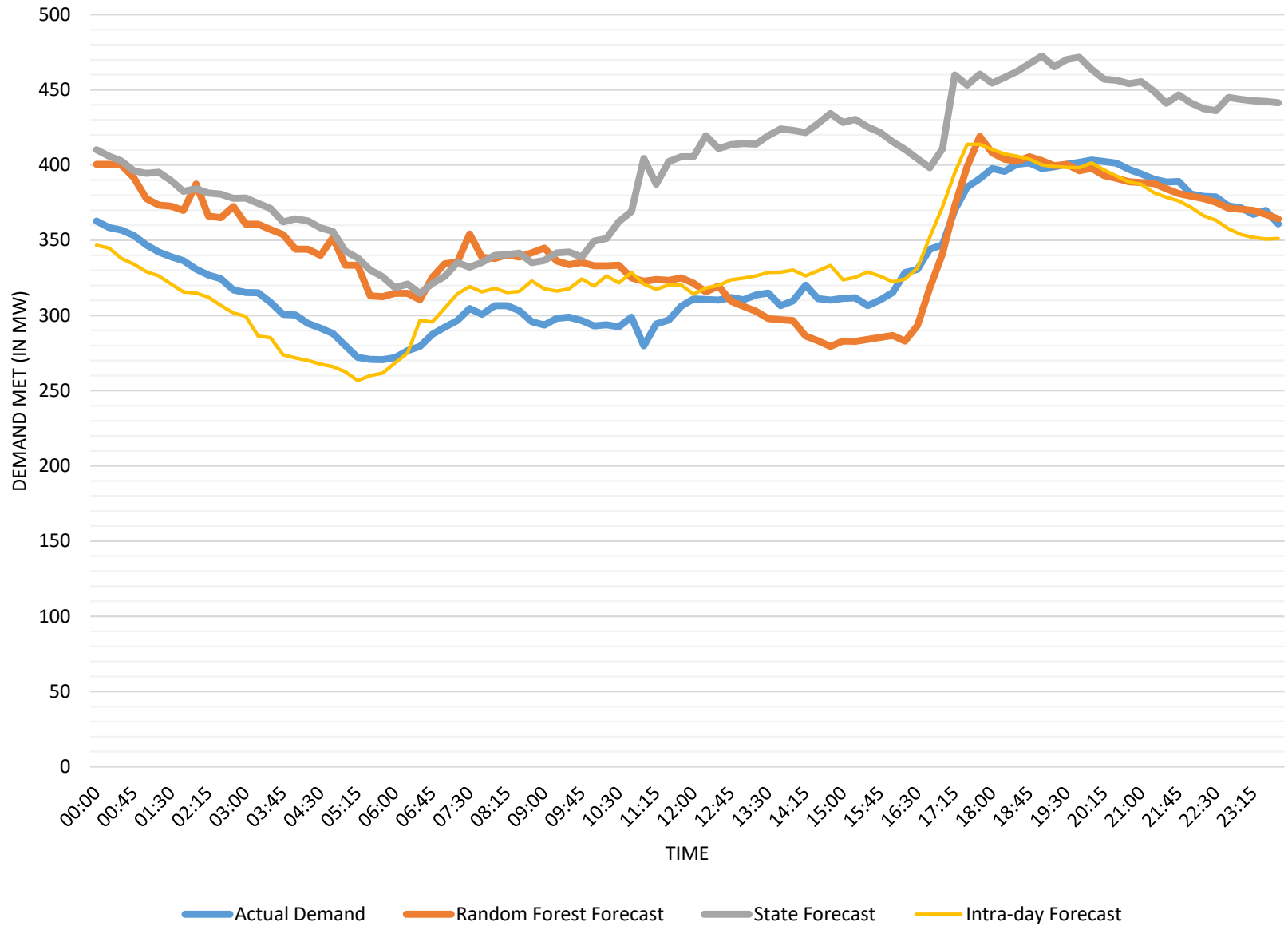
RF : Max, Min & Avg. (in MW) : 158 , 85 & 120

State : Max, Min & Avg. (in MW) : 173 , 89 & 132

IntraDay : Max, Min & Avg. (in MW) : 143 , 82 & 108



### Comparison of Load Forecast and Actual Demand of Tripura for 06-Oct-23



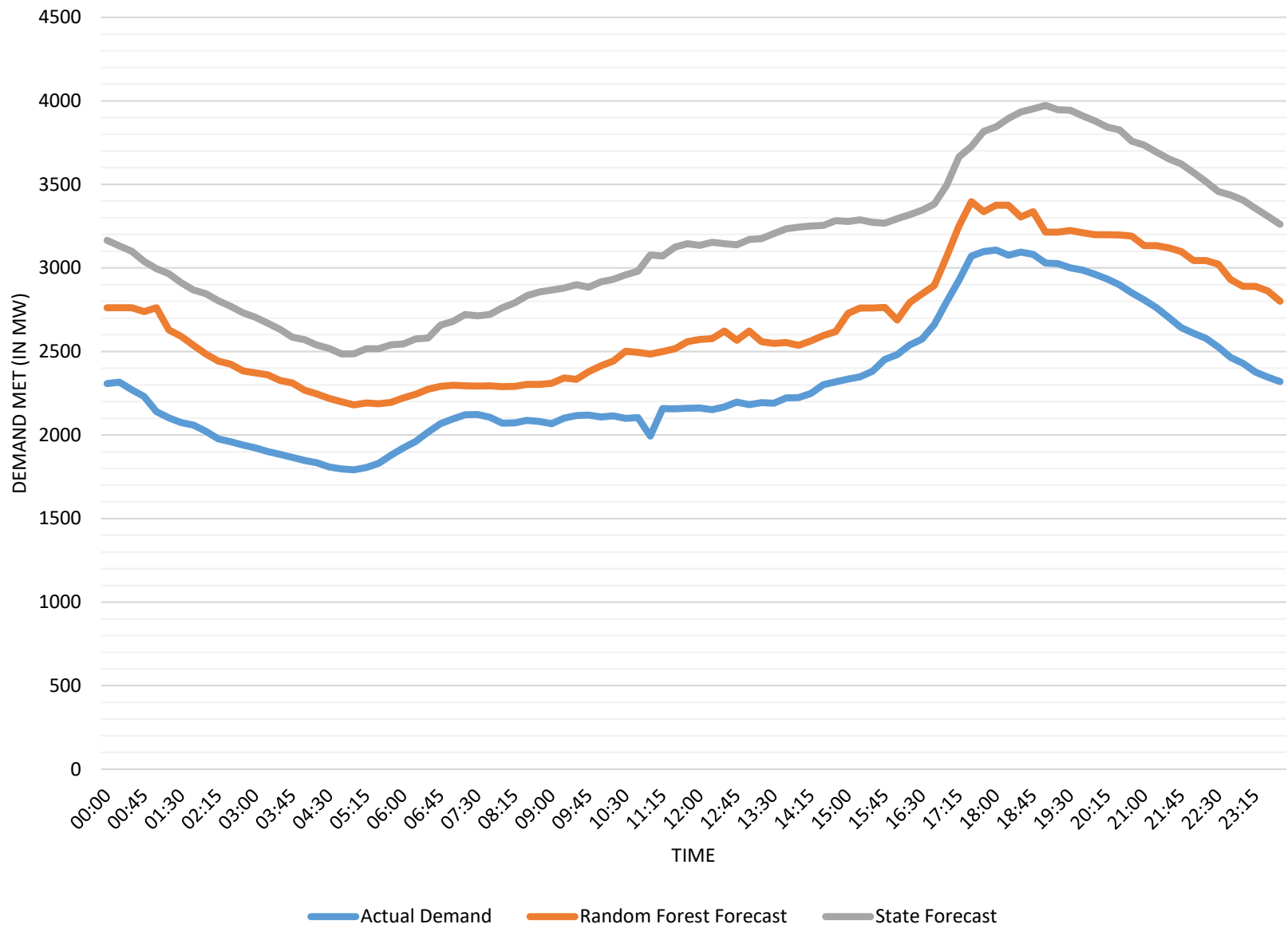
Actual Demand Met : Max, Min & Avg. (in MW) : 403 , 271 & 331

RF : Max, Min & Avg. (in MW) : 419 , 279 & 348

State : Max, Min & Avg. (in MW) : 472 , 315 & 399

IntraDay : Max, Min & Avg. (in MW) : 414 , 257 & 333

### Comparison of Load Forecast and Actual Demand of NER for 06-Oct-23

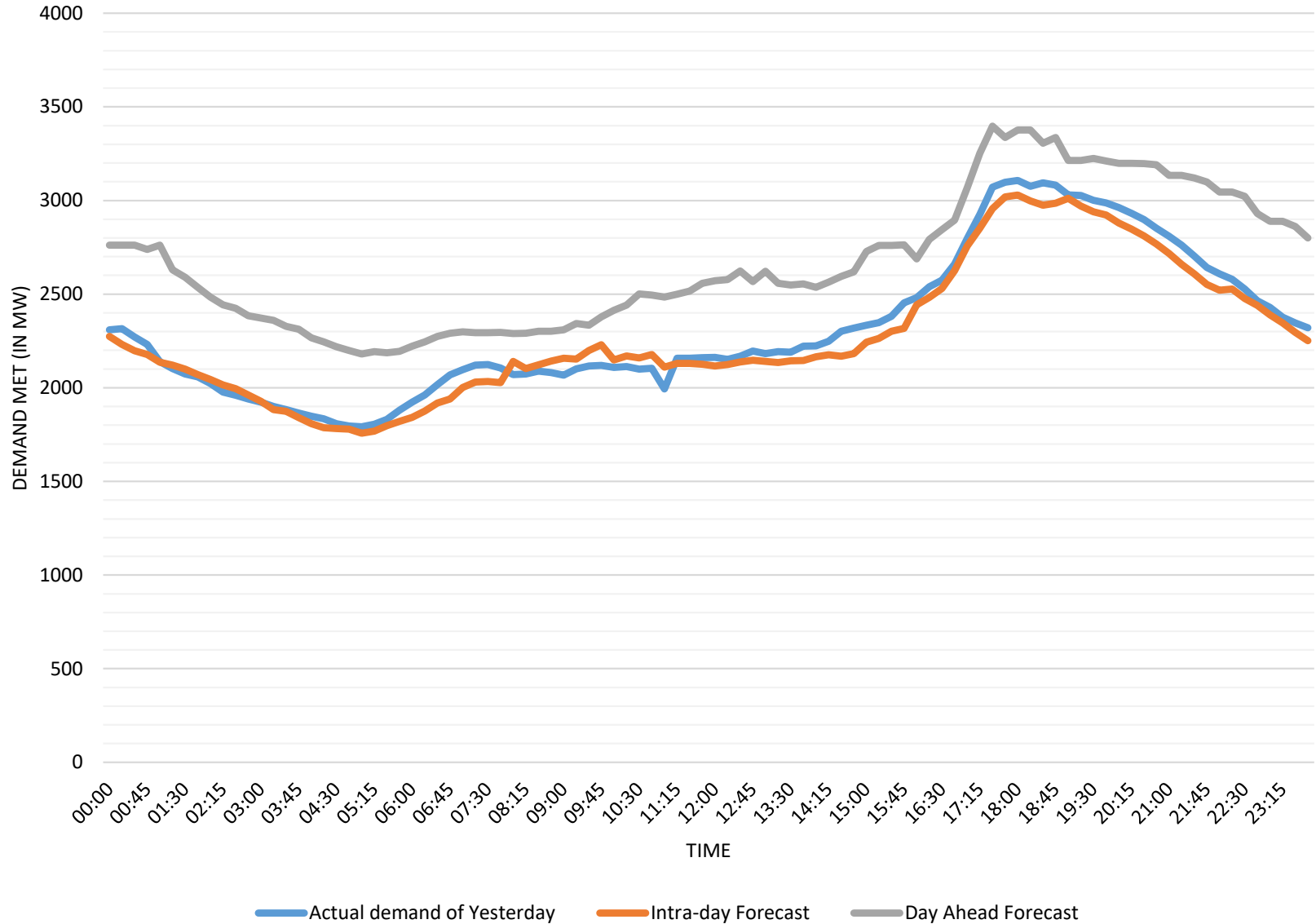


Actual Demand Met : Max, Min & Avg. (in MW) : 3107 , 1792 & 2317

RF : Max, Min & Avg. (in MW) : 3397 , 2180 & 2669

State : Max, Min & Avg. (in MW) : 3973 , 2485 & 3151

# INTRA-DAY NER DEMAND FORECAST FOR 06-Oct-2023



Actual Demand : Max, Min & Avg. (in MW) : 3107 , 1792 & 2317

Intra-day : Max, Min & Avg. (in MW) : 3029 , 1757 & 2278

Day Ahead Forecast : Max, Min & Avg. (in MW) : 3397 , 2180 & 2669