

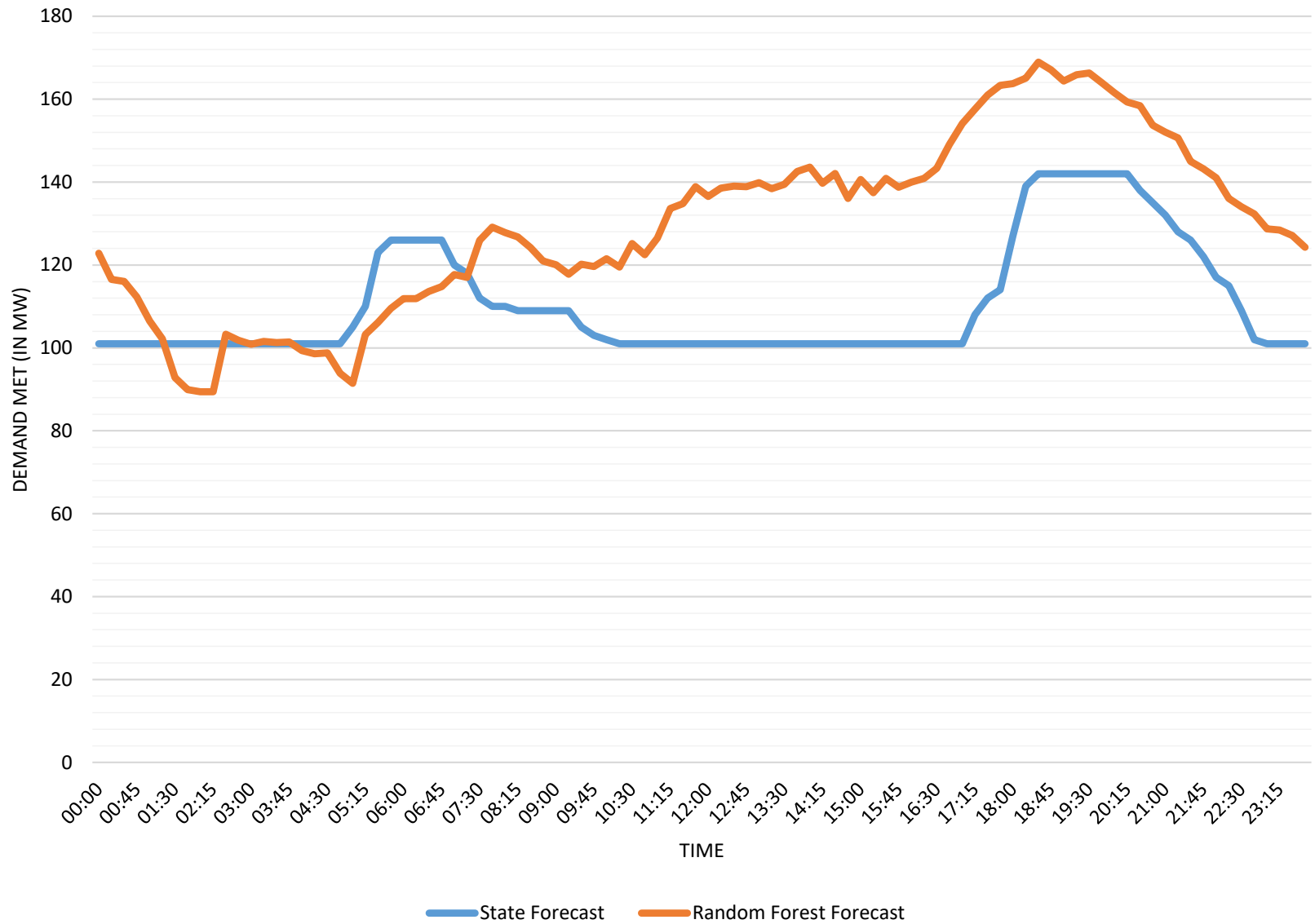
## **Load Forecast of NER States for 06-Oct-23 & Comparison with Actual Demand Met of 04-Oct-23**

**\* Load forecast of NER States and NER is done using Random Forest Method.**

**\* Load forecast is done at 15 minutes time-block.**

**\* Load forecast data submitted by the States is also included.**

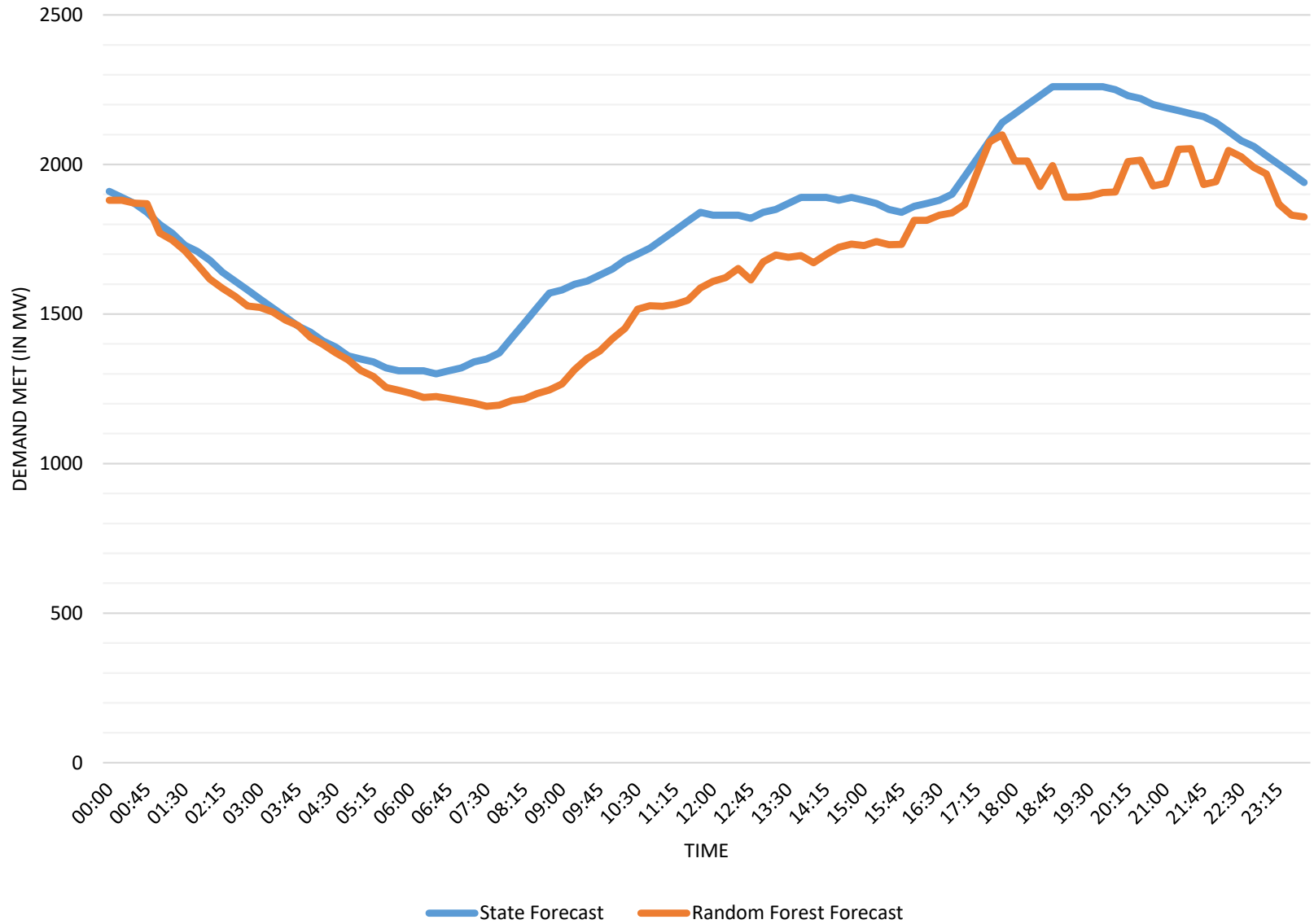
# Load Forecast of Arunachal Pradesh for 06-Oct-23



RF : Max, Min & Avg. (in MW) : 169 , 89 & 130

State : Max, Min & Avg. (in MW) : 142 , 101 & 110

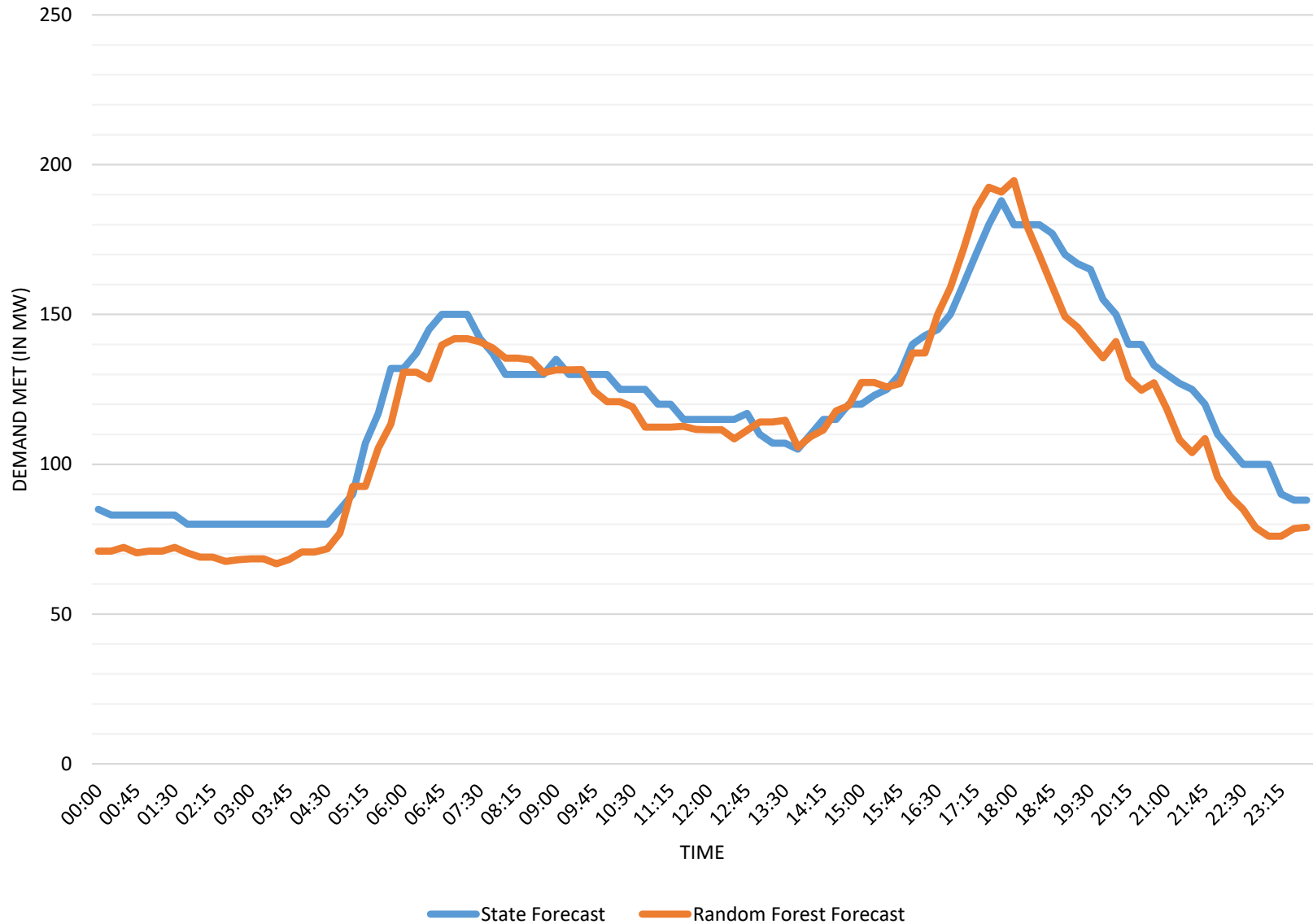
# Load Forecast of Assam for 06-Oct-23



RF : Max, Min & Avg. (in MW) : 2099 , 1192 & 1651

State : Max, Min & Avg. (in MW) : 2260 , 1300 & 1794

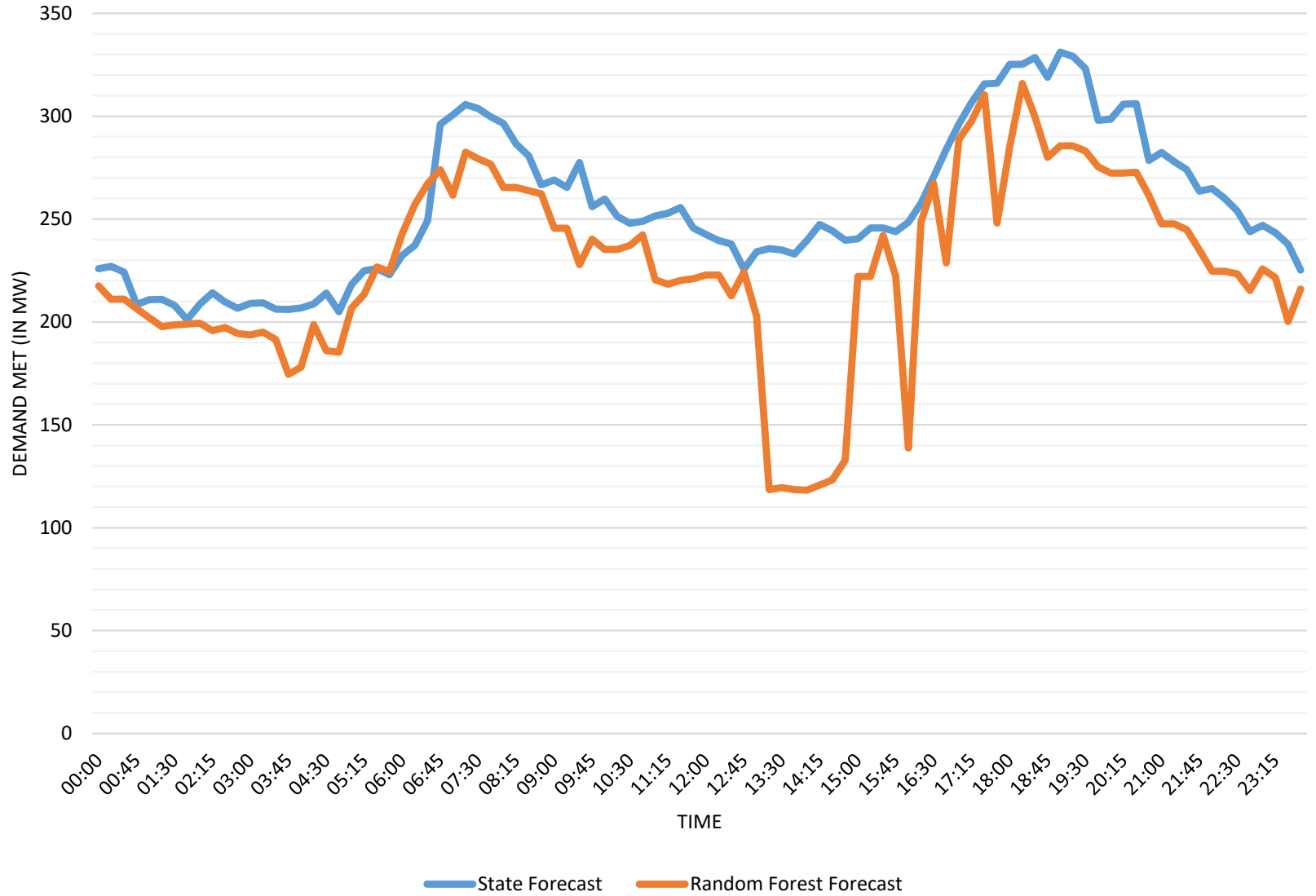
# Load Forecast of Manipur for 06-Oct-23



RF : Max, Min & Avg. (in MW) : 195 , 67 & 114

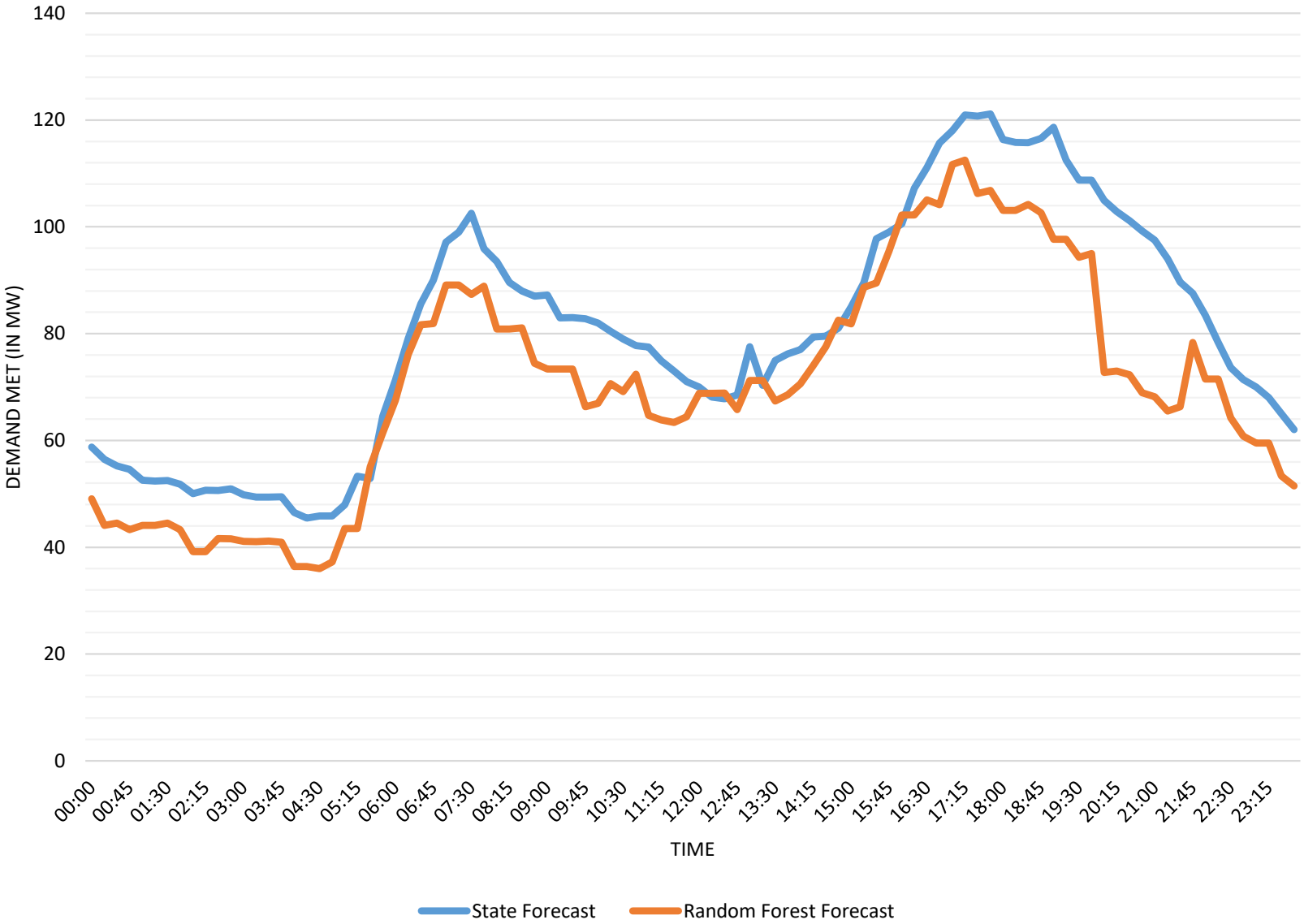
State : Max, Min & Avg. (in MW) : 188 , 80 & 121

# Load Forecast of Meghalaya for 06-Oct-23



RF : Max, Min & Avg. (in MW) : 316 , 118 & 227  
State : Max, Min & Avg. (in MW) : 331 , 201 & 255

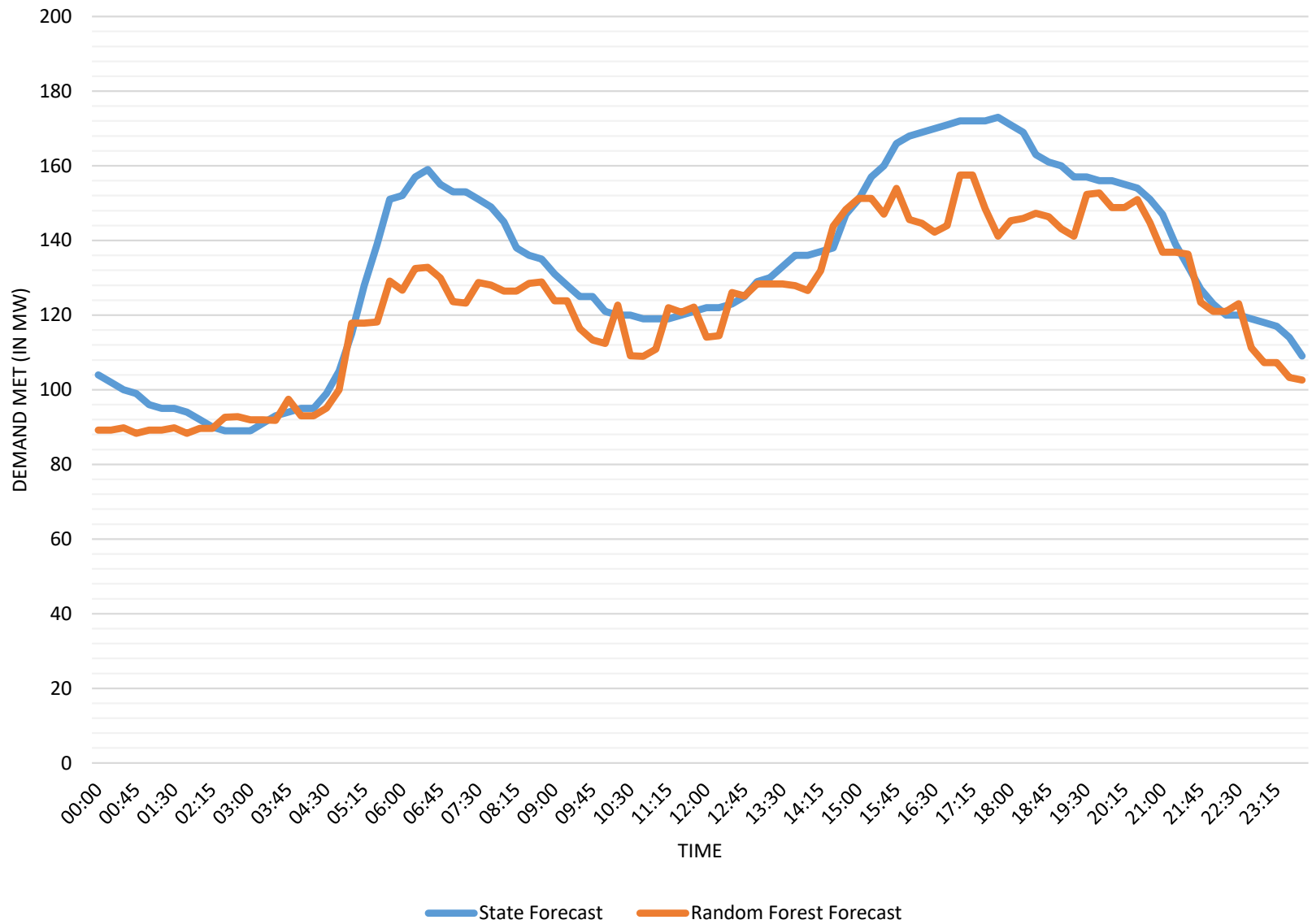
# Load Forecast of Mizoram for 06-Oct-23



RF : Max, Min & Avg. (in MW) : 112 , 36 & 70

State : Max, Min & Avg. (in MW) : 121 , 45 & 80

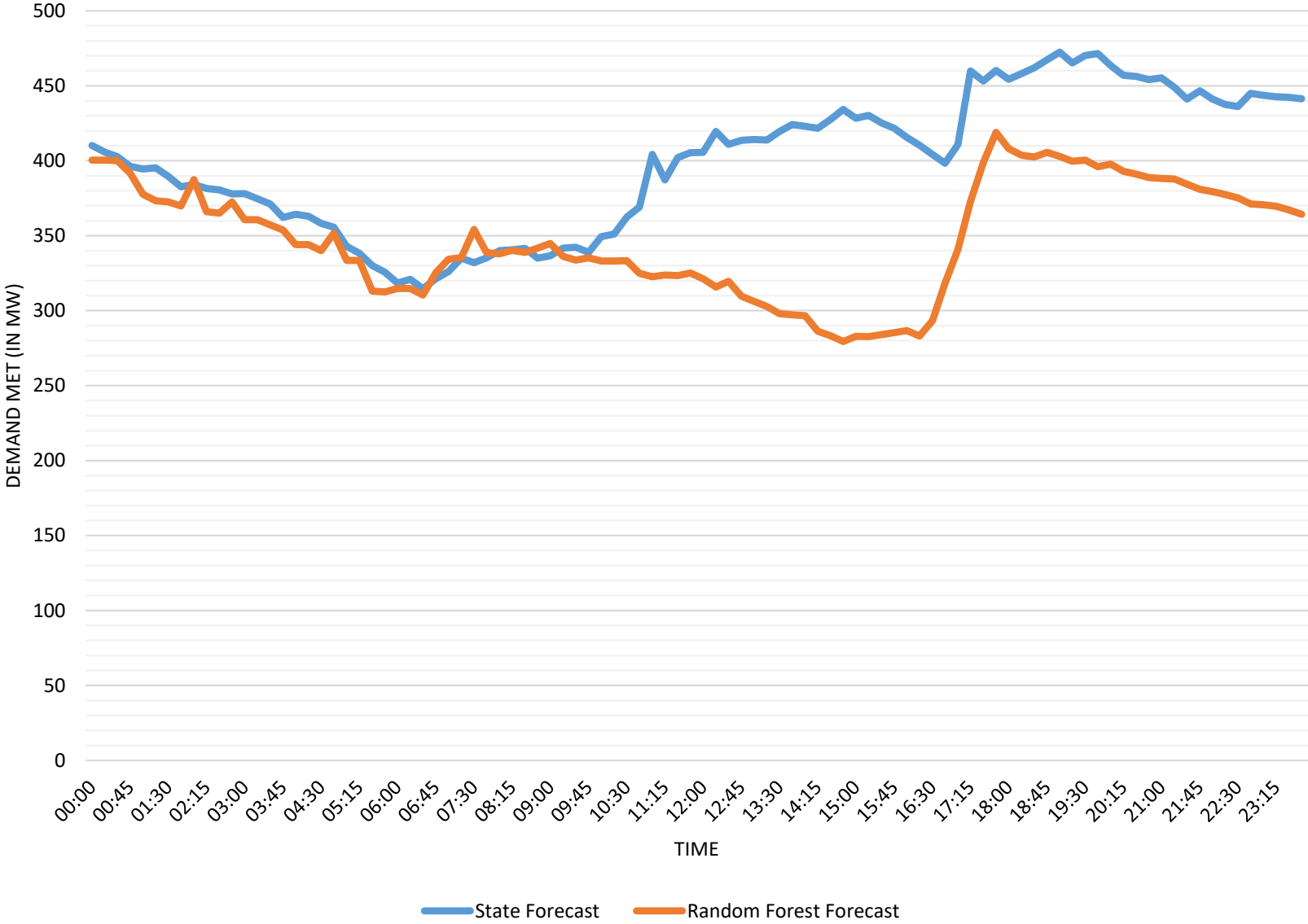
# Load Forecast of Nagaland for 06-Oct-23



RF : Max, Min & Avg. (in MW) : 158 , 88 & 123

State : Max, Min & Avg. (in MW) : 173 , 89 & 132

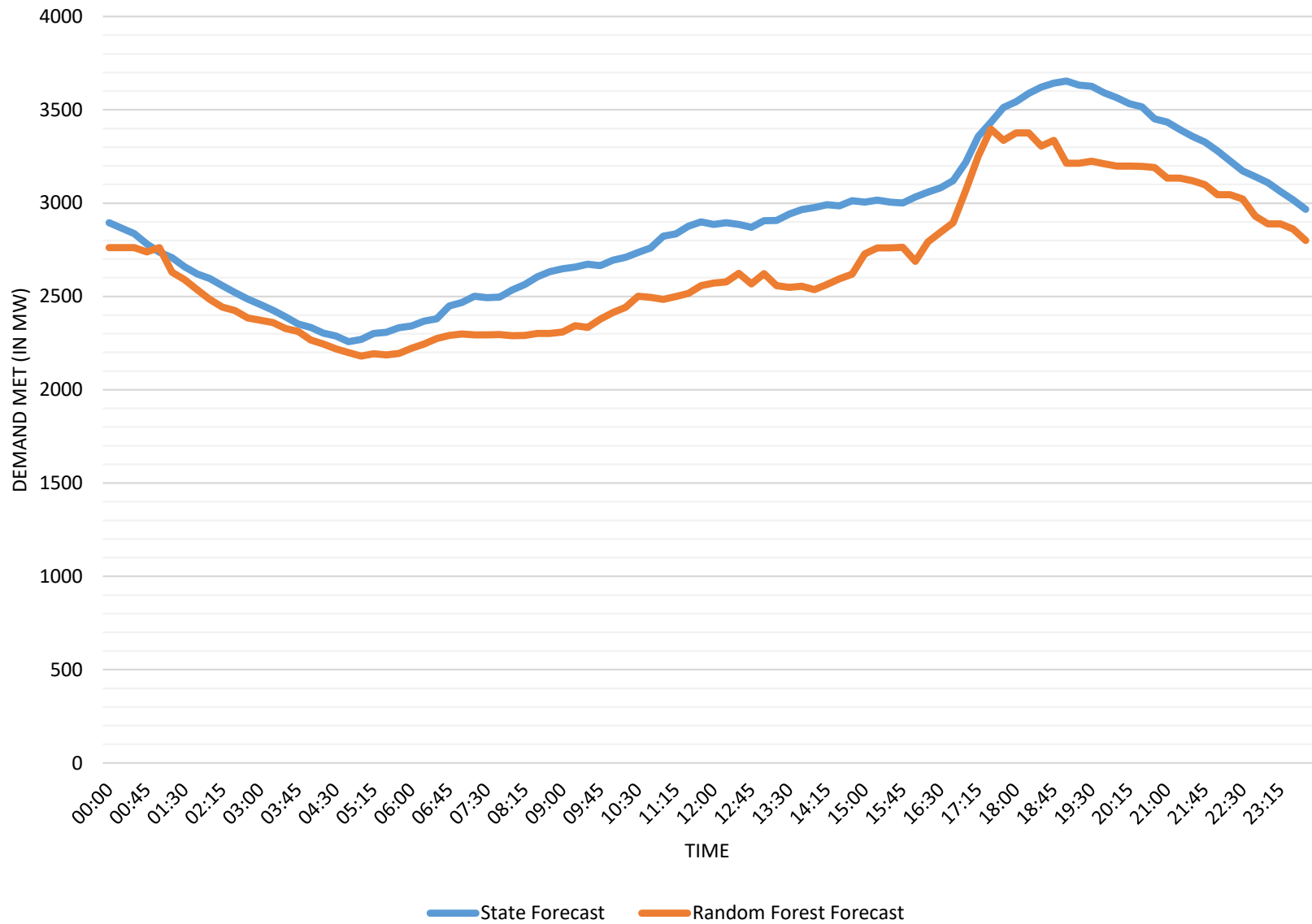
# Load Forecast of Tripura for 06-Oct-23



RF : Max, Min & Avg. (in MW) : 419 , 279 & 348  
State : Max, Min & Avg. (in MW) : 472 , 315 & 399



# Load Forecast of NER for 06-Oct-23



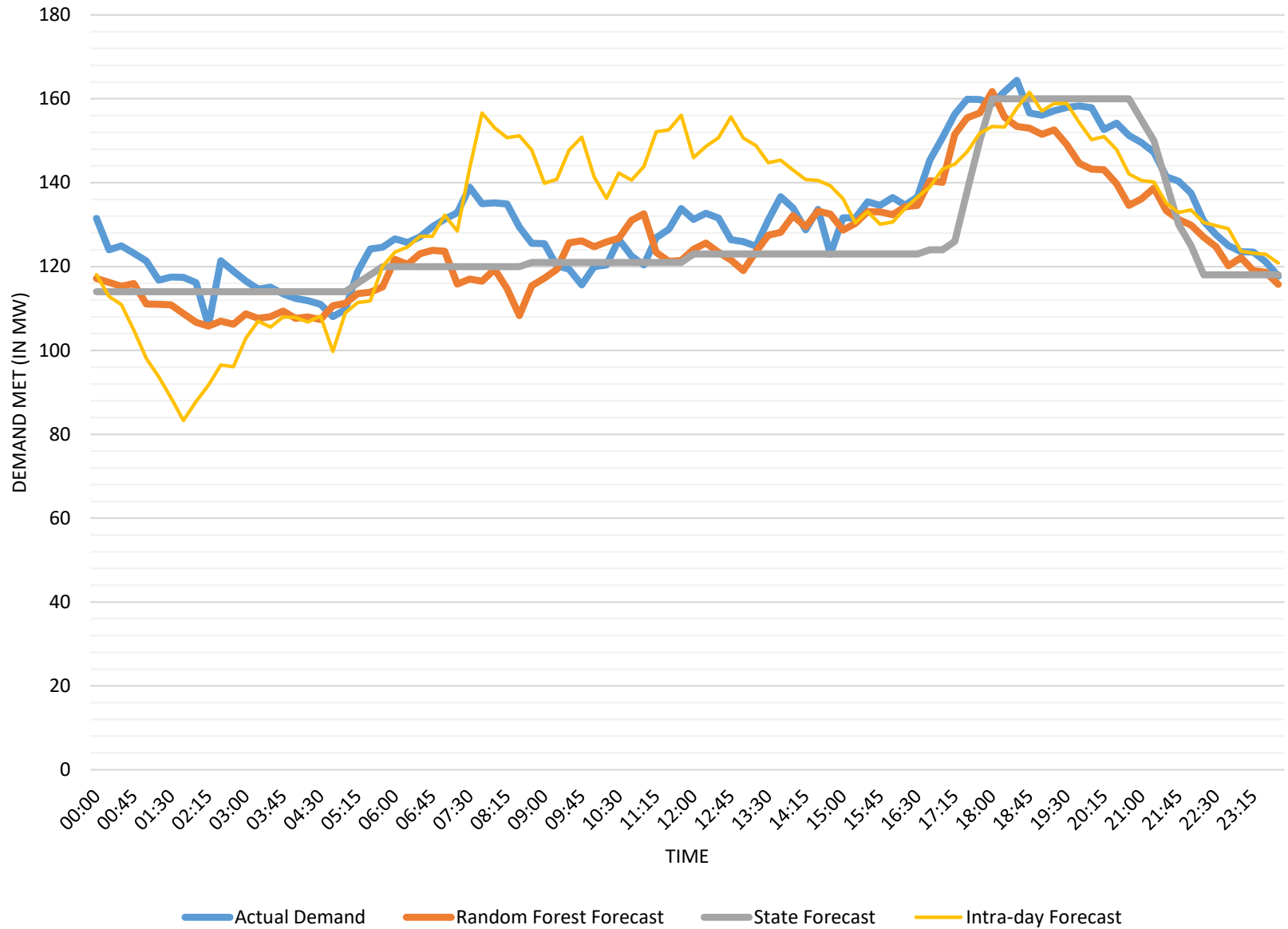
RF : Max, Min & Avg. (in MW) : 3397 , 2180 & 2669

State : Max, Min & Avg. (in MW) : 3654 , 2258 & 2892

## MAPE Table

Date of Comparison	04-Oct-23	Arunachal Pradesh	Assam	Manipur	Meghalaya	Mizoram	Nagaland	Tripura	NER
Percentage (%)	State Forecast	5.4	10.1	8.5	63.5	30.9	9.9	23.2	20.8
	Random Forest Forecast	5.4	8.2	5.4	60.4	10.7	4.9	26.3	6.8
	Intra - Day Forecast	8.9	2.2	4.0	5.0	7.6	4.6	5.3	3.0

Comparison of Load Forecast and Actual Demand of Arunachal Pradesh for 04-Oct-23



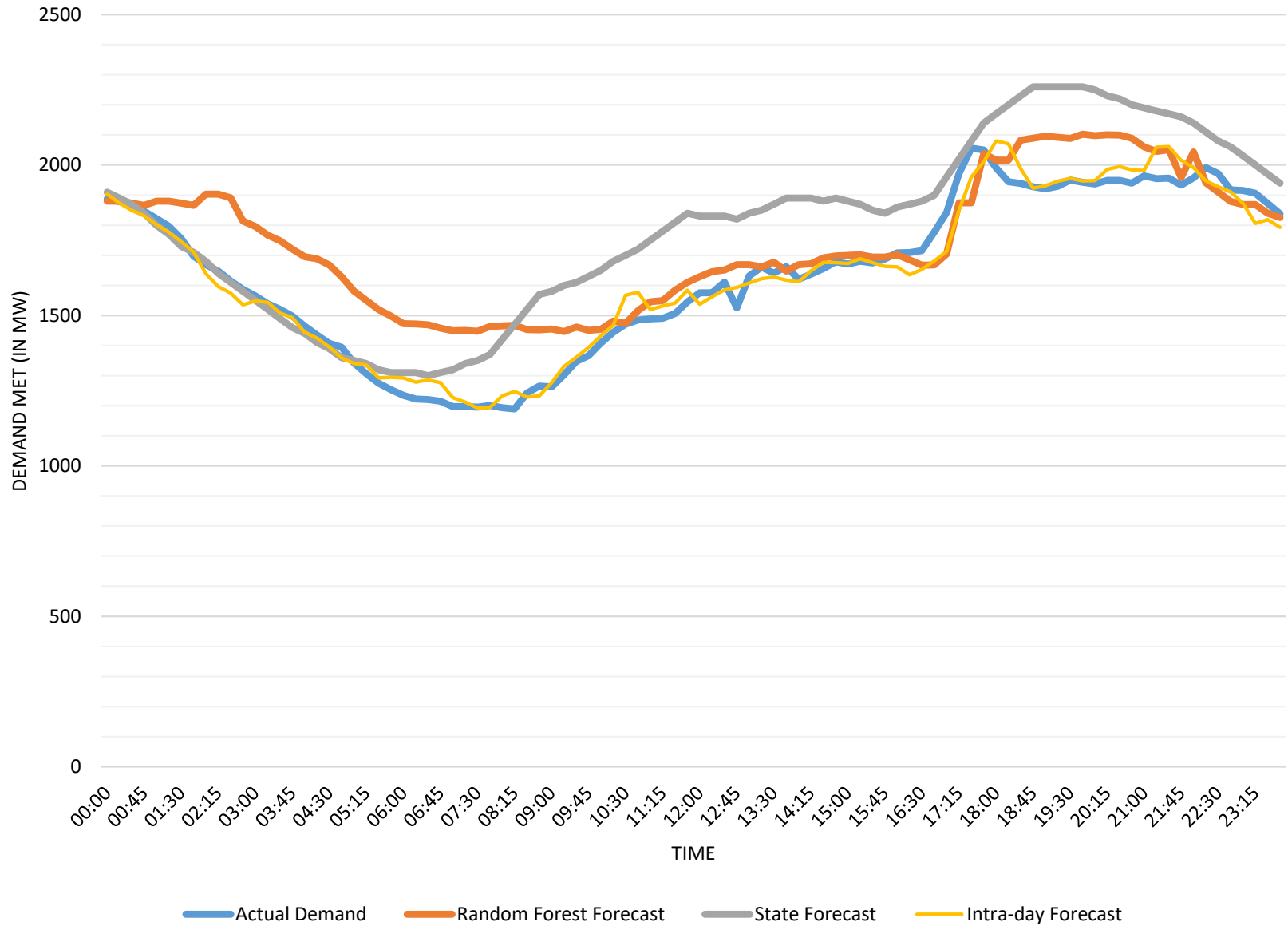
Actual Demand Met : Max, Min & Avg. (in MW) : 164 , 106 & 131

RF : Max, Min & Avg. (in MW) : 162 , 106 & 126

State : Max, Min & Avg. (in MW) : 160 , 114 & 126

IntraDay : Max, Min & Avg. (in MW) : 162 , 83 & 132

### Comparison of Load Forecast and Actual Demand of Assam for 04-Oct-23



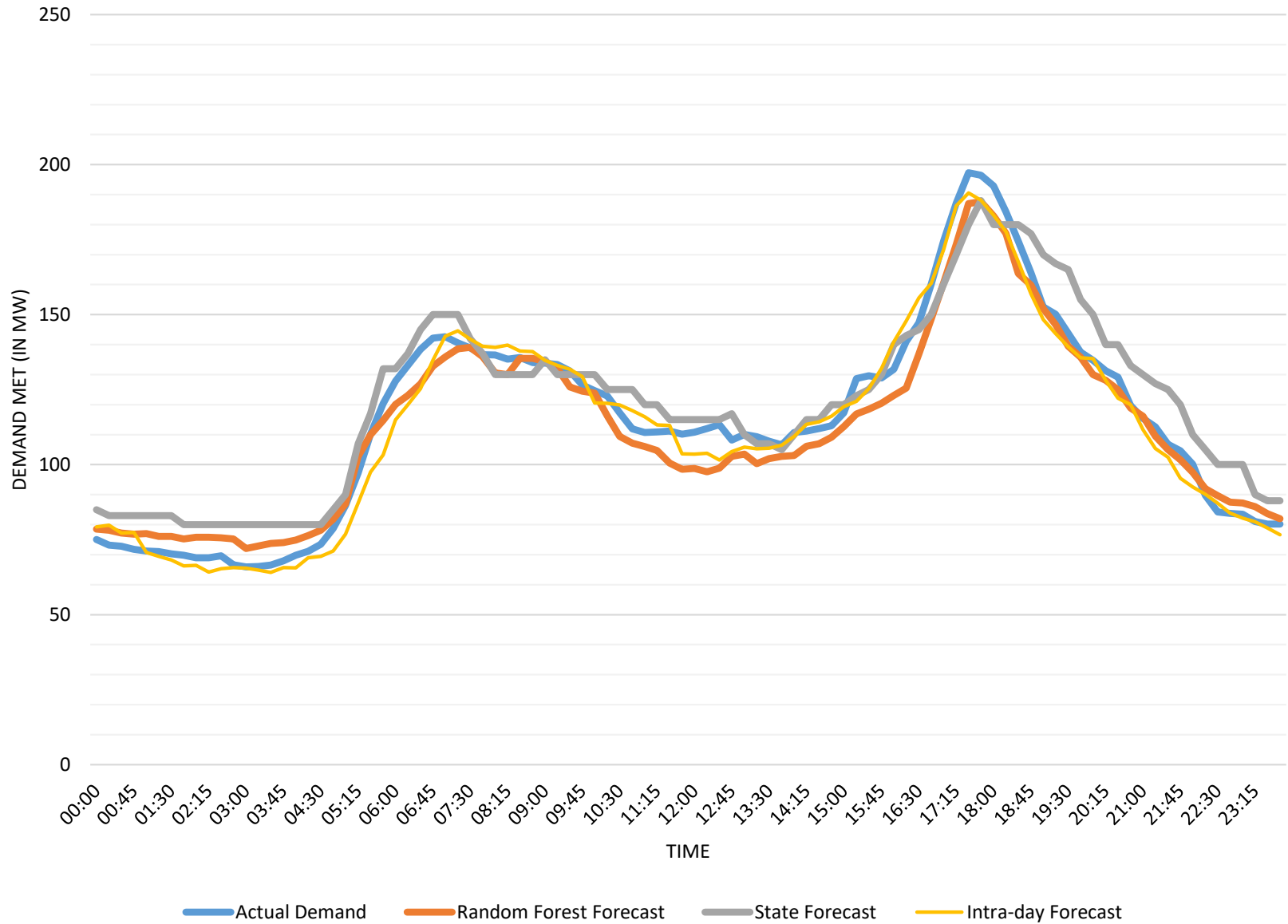
Actual Demand Met : Max, Min & Avg. (in MW) : 2056 , 1189 & 1638

RF : Max, Min & Avg. (in MW) : 2102 , 1446 & 1741

State : Max, Min & Avg. (in MW) : 2260 , 1300 & 1794

IntraDay : Max, Min & Avg. (in MW) : 2080 , 1192 & 1640

### Comparison of Load Forecast and Actual Demand of Manipur for 04-Oct-23



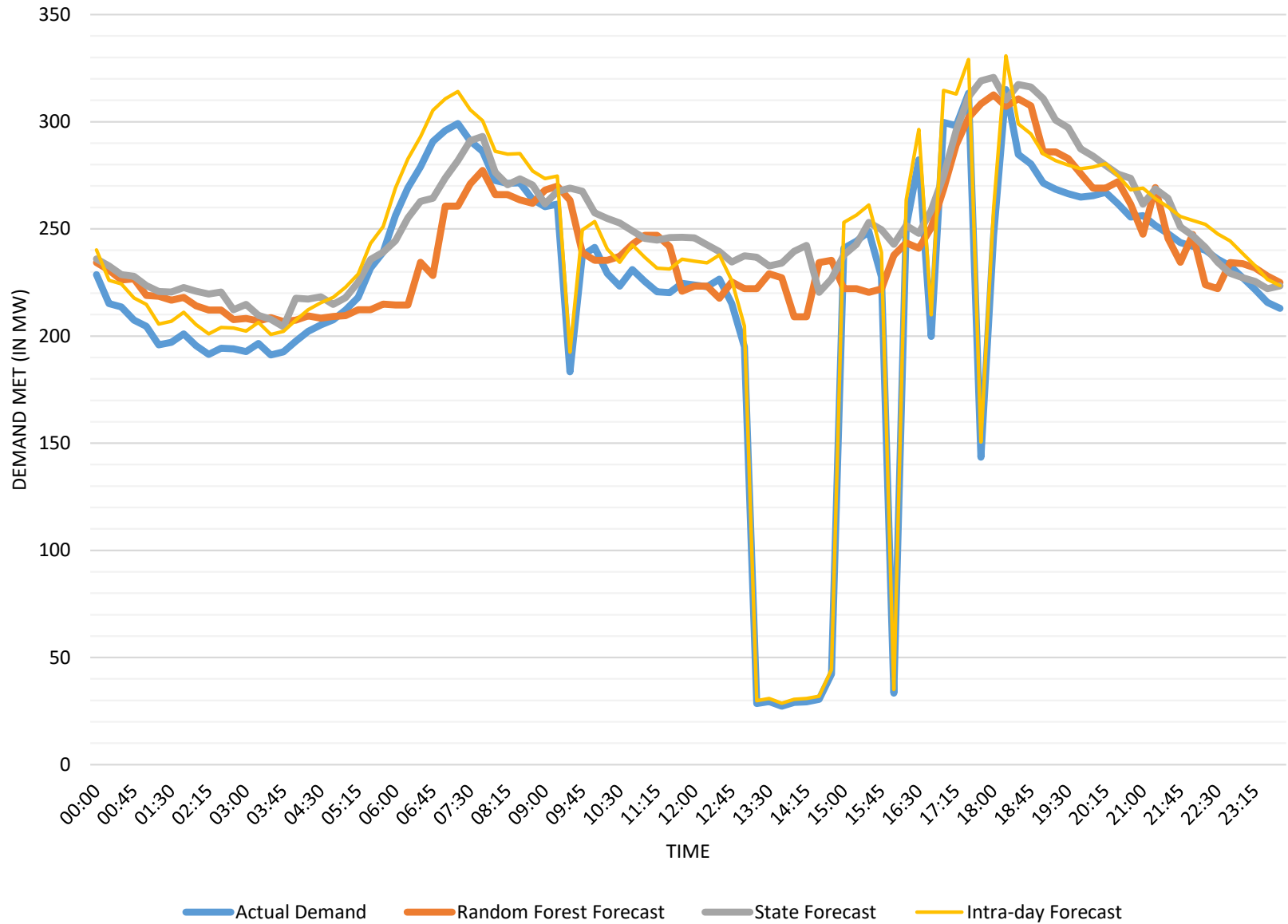
Actual Demand Met : Max, Min & Avg. (in MW) : 197 , 66 & 115

RF : Max, Min & Avg. (in MW) : 188 , 72 & 112

State : Max, Min & Avg. (in MW) : 188 , 80 & 121

IntraDay : Max, Min & Avg. (in MW) : 191 , 64 & 112

### Comparison of Load Forecast and Actual Demand of Meghalaya for 04-Oct-23



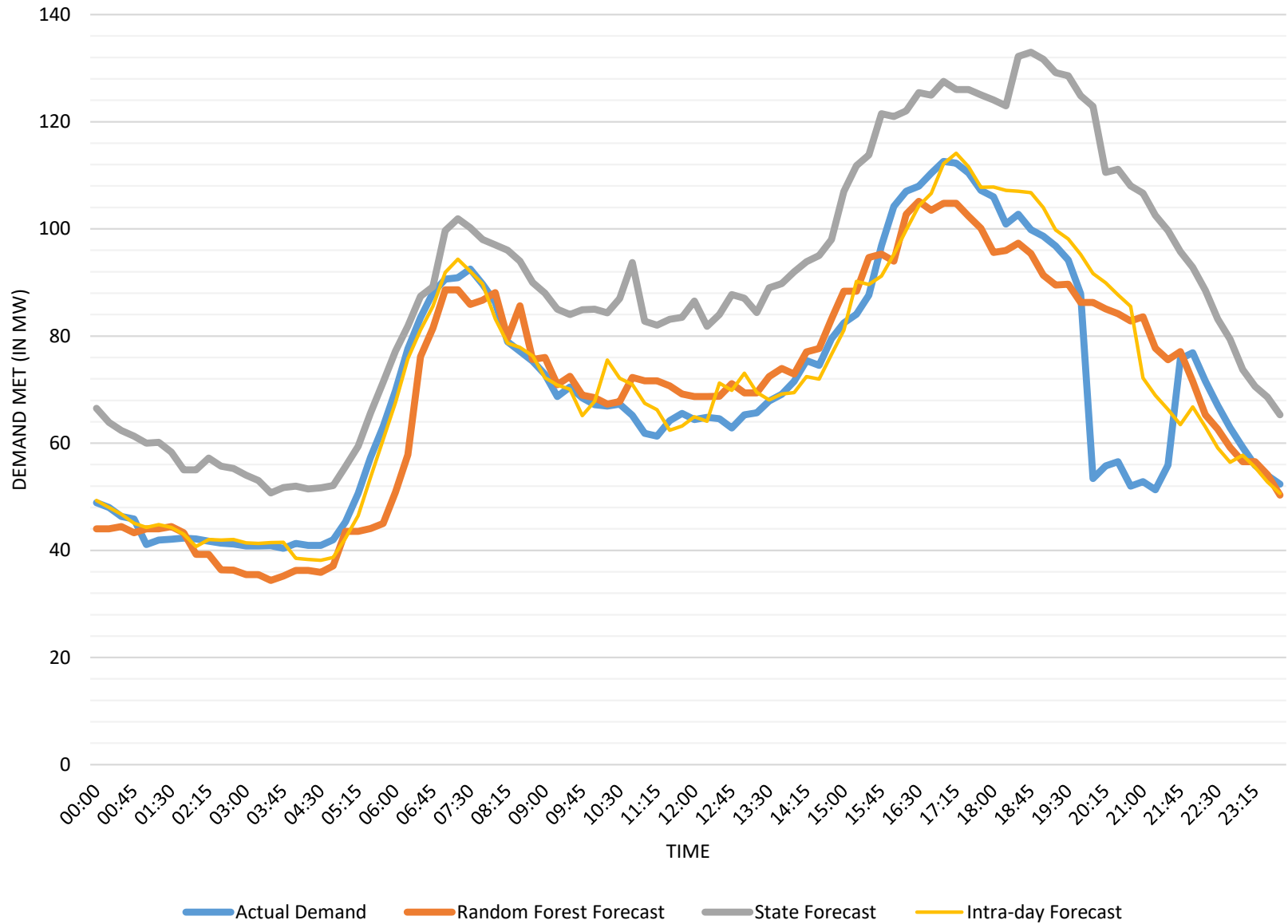
Actual Demand Met : Max, Min & Avg. (in MW) : 315 , 27 & 221

RF : Max, Min & Avg. (in MW) : 313 , 207 & 241

State : Max, Min & Avg. (in MW) : 321 , 204 & 251

IntraDay : Max, Min & Avg. (in MW) : 331 , 29 & 232

### Comparison of Load Forecast and Actual Demand of Mizoram for 04-Oct-23



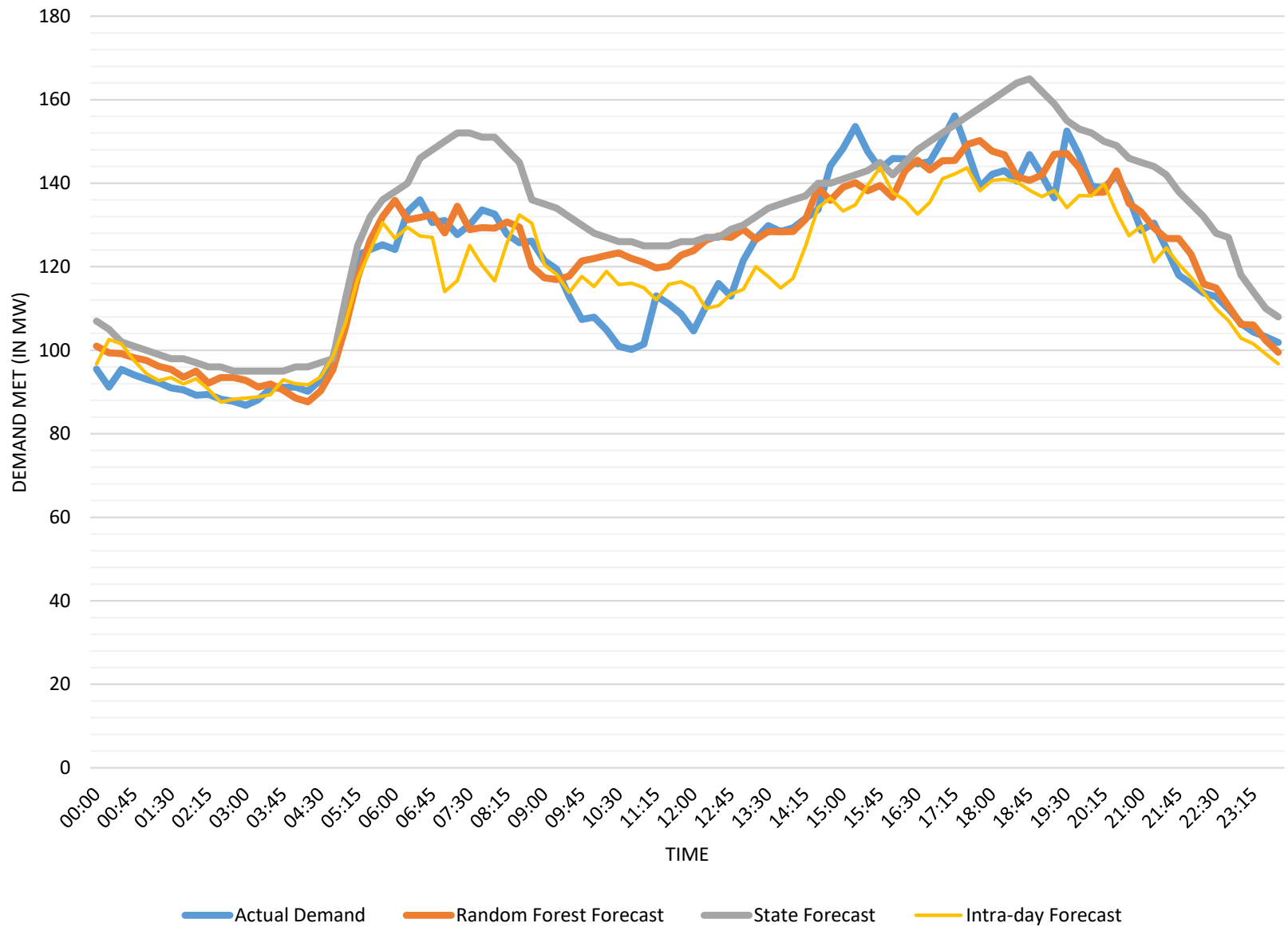
Actual Demand Met : Max, Min & Avg. (in MW) : 113 , 40 & 69

RF : Max, Min & Avg. (in MW) : 105 , 34 & 70

State : Max, Min & Avg. (in MW) : 133 , 51 & 89

IntraDay : Max, Min & Avg. (in MW) : 114 , 38 & 71

### Comparison of Load Forecast and Actual Demand of Nagaland for 04-Oct-23



Actual Demand Met : Max, Min & Avg. (in MW) : 156 , 87 & 120

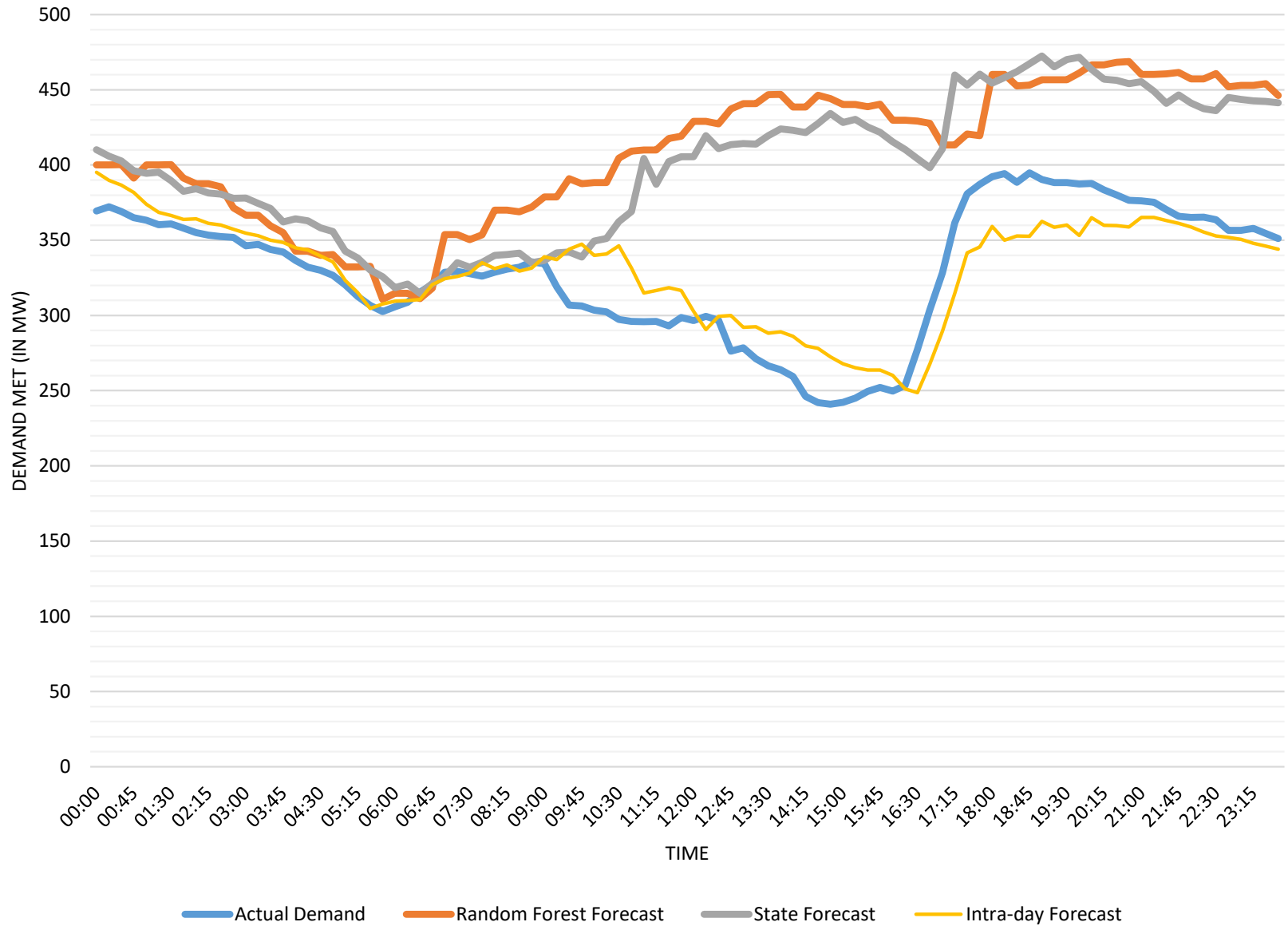
RF : Max, Min & Avg. (in MW) : 150 , 88 & 122

State : Max, Min & Avg. (in MW) : 165 , 95 & 131

IntraDay : Max, Min & Avg. (in MW) : 144 , 88 & 118



### Comparison of Load Forecast and Actual Demand of Tripura for 04-Oct-23



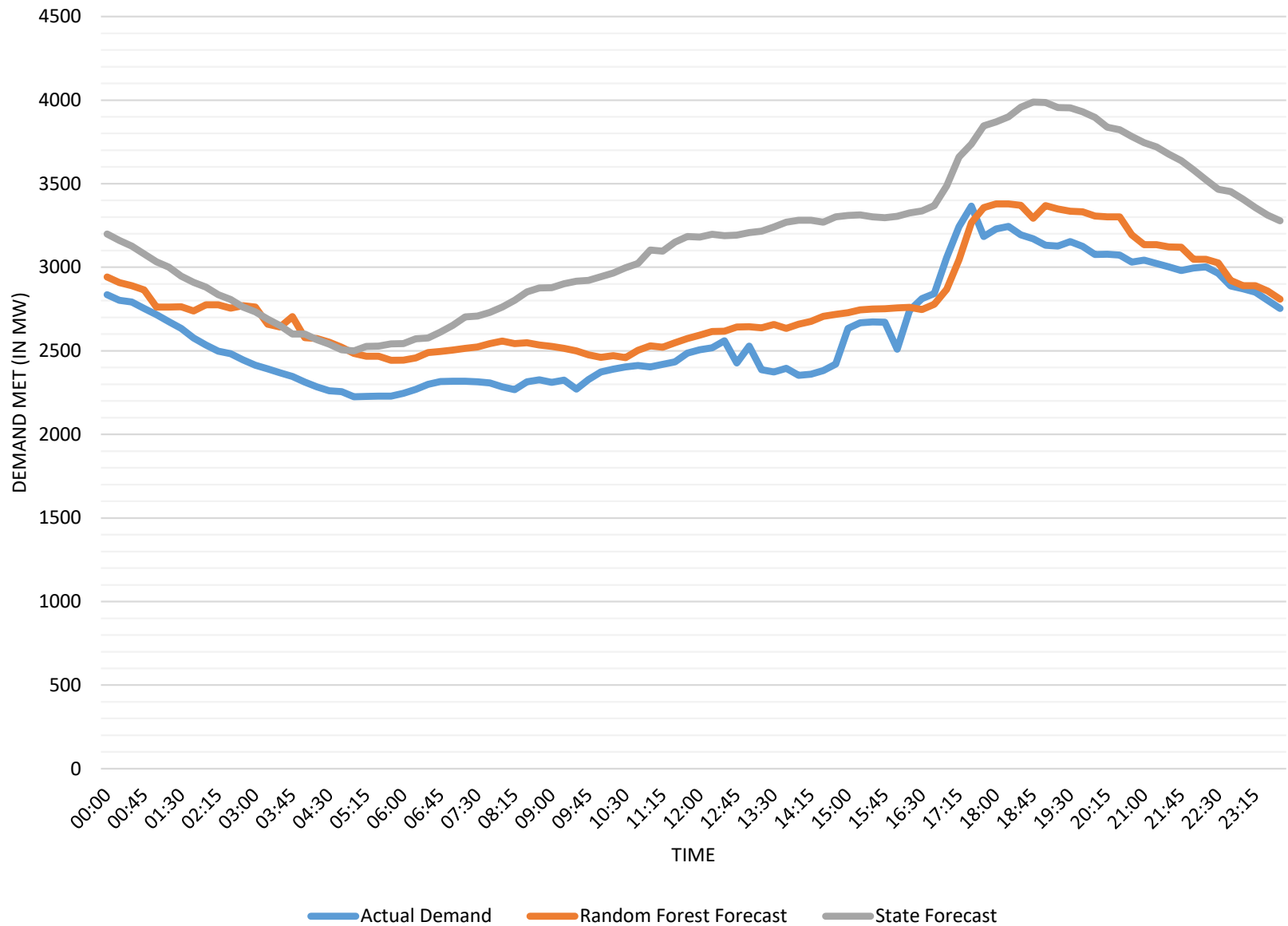
Actual Demand Met : Max, Min & Avg. (in MW) : 395 , 241 & 329

RF : Max, Min & Avg. (in MW) : 469 , 311 & 408

State : Max, Min & Avg. (in MW) : 472 , 315 & 399

IntraDay : Max, Min & Avg. (in MW) : 395 , 249 & 331

### Comparison of Load Forecast and Actual Demand of NER for 04-Oct-23

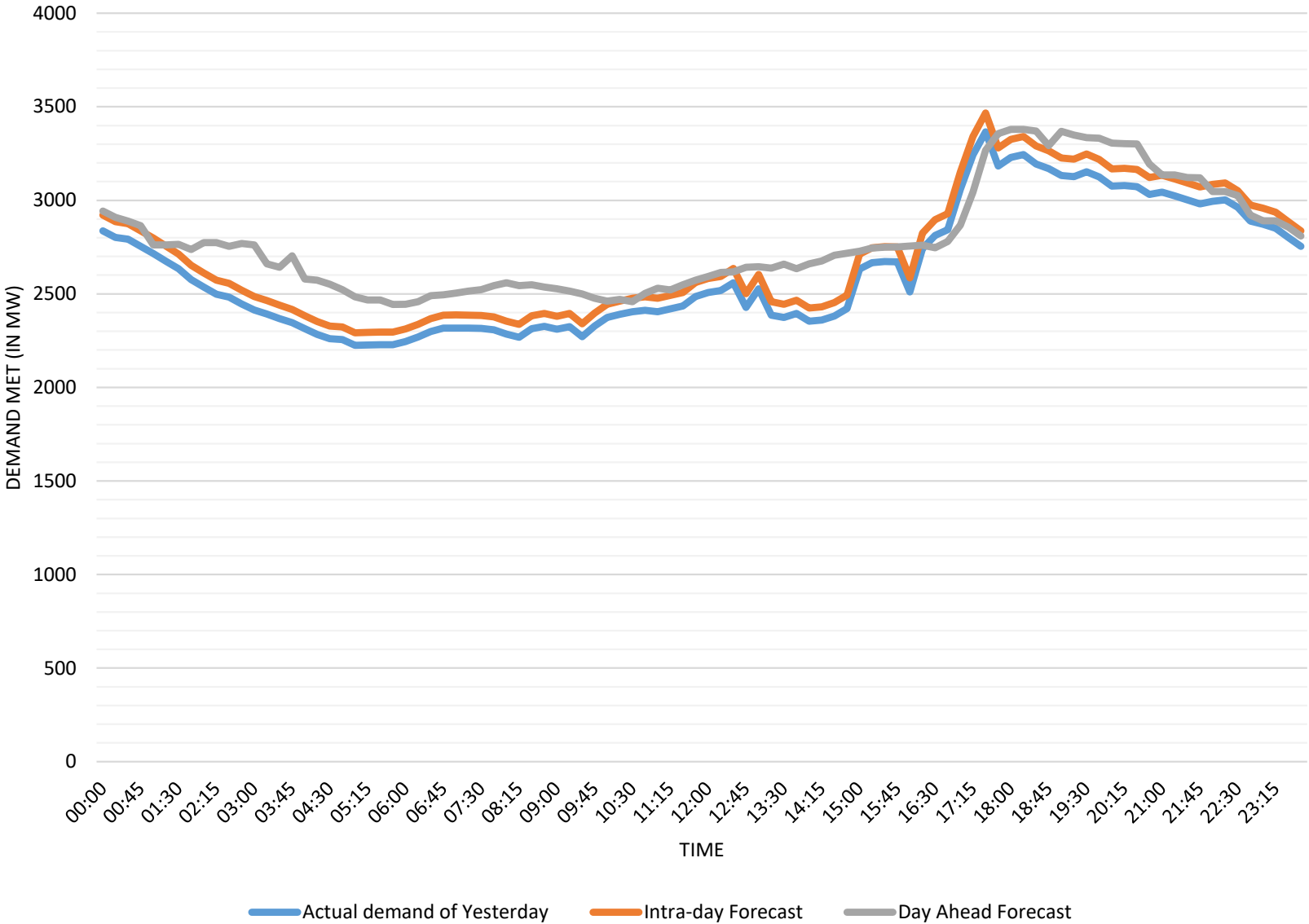


Actual Demand Met : Max, Min & Avg. (in MW) : 3366 , 2225 & 2624

RF : Max, Min & Avg. (in MW) : 3379 , 2443 & 2782

State : Max, Min & Avg. (in MW) : 3988 , 2500 & 3170

# INTRA-DAY NER DEMAND FORECAST FOR 04-Oct-2023



Actual Demand : Max, Min & Avg. (in MW) : 3366 , 2225 & 2624

Intra-day : Max, Min & Avg. (in MW) : 3467 , 2292 & 2702

Day Ahead Forecast : Max, Min & Avg. (in MW) : 3379 , 2443 & 2782